

**eezeeFAX**

- Network Faxserver -

# User Manual



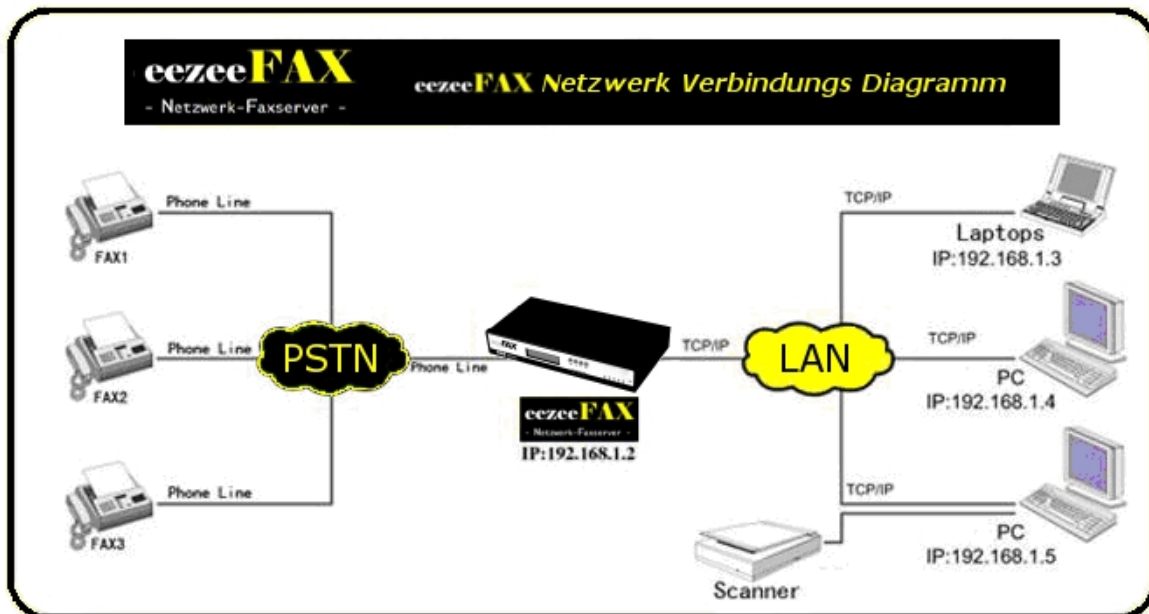
## TABLE OF CONTENT:

---

A. Fax Server Connection Diagram.....	4
B. IP Address and system time setting.....	4
1. Login Fax Server.....	7
2. Main menu .....	8
3. Send FAX.....	9
a) Format Conversion .....	9
b) Send FAX.....	9
c) Fax Broadcast.....	11
d) Internal File Forward.....	12
4. Fax Folders .....	13
a) InBox .....	13
b) OutBox .....	14
c) SentBox.....	14
5. Phone books (support UTF8) .....	14
a) Private phone book.....	14
b) Public phone book.....	15
6. Management .....	16
a) Dept Manage .....	16
b) User Manage .....	16
1) Add User .....	16
2) Delete User .....	19
3) Edit User .....	19
c) Fax-routing Table .....	19
d) Routing Strategy .....	20
7. My Setting.....	21
a) Send Preferences.....	21
b) My Account.....	22
8. Server Setting .....	24
a) Network .....	24
b) Line.....	25
c) Voice Setting.....	27
d) Dialrules.....	27
e) Email2fax .....	28
f) Backup .....	29
g) Delete rules.....	29
h) Time Setting .....	30
i) Language Setting .....	30
j) Remote Printer .....	30

9.	Log and task list .....	32
	a) Events.....	32
	b) Fax Queue .....	32
	c) Sent .....	32
	d) Received.....	33
	e) Distribution Log .....	33
	f) Transmit .....	34
10.	Tools .....	34
	a) Server Status.....	34
	b) Ping Test.....	35
	c) SMTP Test.....	35
	d) Files Delete .....	36
	e) Parameters Backup.....	36
	f) Update .....	36
	g) Factory Restore.....	36
	h) Reboot .....	36
11.	Downloads .....	37
	a) Alternatiff .....	37
	b) Print Drivers.....	37
	c) Print2fax user's guide.....	38
	d) Voice recording.....	45
12.	Appendix (the default) .....	46
	a) Network and Time Default .....	46
	b) Line Setting .....	46
	c) Default User.....	47
	d) Voice document default .....	47

## A. Fax Server Connection Diagram



## B. IP Address and system time setting

### 1. Fax Server Front Panel



- Press “←” button, then IP Address1 will appear on LCD
- Check Subnet Mask1, IP Address2, Subnet Mask2, IP Address3, Subnet Mask3, Router Address, DNS Address, date and time by pressing the “◀” and “▶” button
- Press “←” again while you need to modify the information menu, then login the setting model, LCD will place the position by glittery cursor. Place the cursor position by pressing “◀” and “▶” to point the data needs change; Press “←” to update the pointed data
- Press “■” to return the display model after the parameter set, and the change will be saved temporarily by system automatically. The updated information will be mark “\*” and displayed on the top right corner of LCD to notify users this information still not be stored into fax server
- Repeat step 2, 3, 4 until all data you need to change is set

Press “◀” and “▶” till “Save Change” or “Discard Change” appears on LCD. If you need to store the setting data, press “←” while “Save Change” appears on LCD, then it will clue to

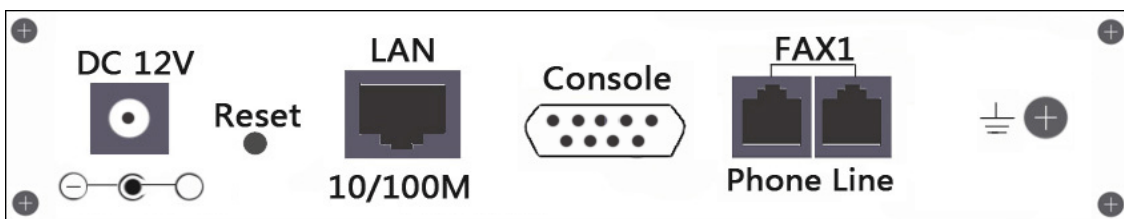
“Save Change? Yes”, press “←” to store your setting, also you can press “▶” to switch to “Save Change? No”, press “←” to return the status of step4 without any saving. If you want to ignore the modification, press “←” to login the set model while “Discard Change” appears on LCD, LCD shows “Discard Change? No, press “←” to give up your current setting, and back to the status of step4; also you can press “▶” to switch to “Discard Change? Yes”, press “←” to ignore all changes and back to the status before system changed

Reboot the fax server to active the modified IP

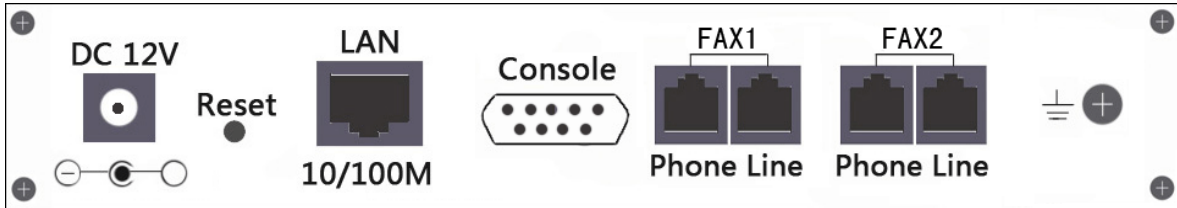
Names of parts		Description
LCD Display		Display system time, IP, and other information
		Set fax server's IP address , date, time
		Manual fax receive Button for FAX1 only
System Indicator	PWR	Fax server main power indicator lights on while connects to power supply
	LINK/ACT	Light up while connects to network. Blinking when network data transmits
	100M	Light up during Ethernet 100M. Blinking during Ethernet 10M
Line Indicator	RD	Light up while modem is ready
	RX	Blinking while receive data
	TX	Blinking while transmit data
	AA	Blinking while ringing
	OH	Lights on while the line is in use

## 2. Fax Server Back Panel

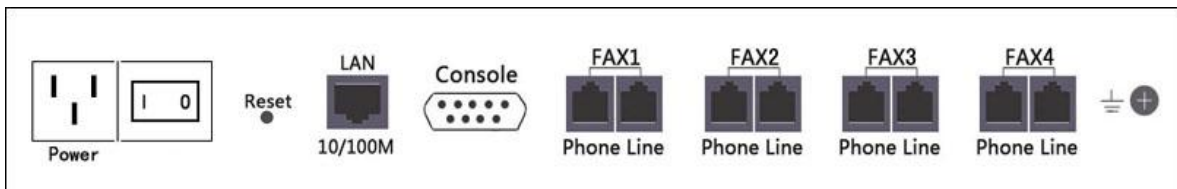
Network Fax Server 1 Port Back Panel:




### Network Fax Server 2 Port Back Panel:



### Network Fax Server 4 Port Back Panel:



Interface Name	Description
DC 12V	DC 12V power adapter
Reset	Restore the factory setting
LAN	RJ-45 standard network interface. Connect to LAN equipment
Console	Standard RS-232 serial interface
Phone	RJ-11 standard telephone line interface. Connect telephone or fax machine
Line	RJ-11 standard telephone line interface. Connect telecom line
	This port is used to connect with ground wire and lightning protection

## 1. Login Fax Server

Open internet explorer, input IP address of Fax Server in the address fence. The default IP address: 192.168.1.200



Enter your user name and password in the login box ,then click “login”. It will display different interface according to the different user’s rights.

System default users	Default password	Competence
admin	123456	System administrators
user	123456	Default user

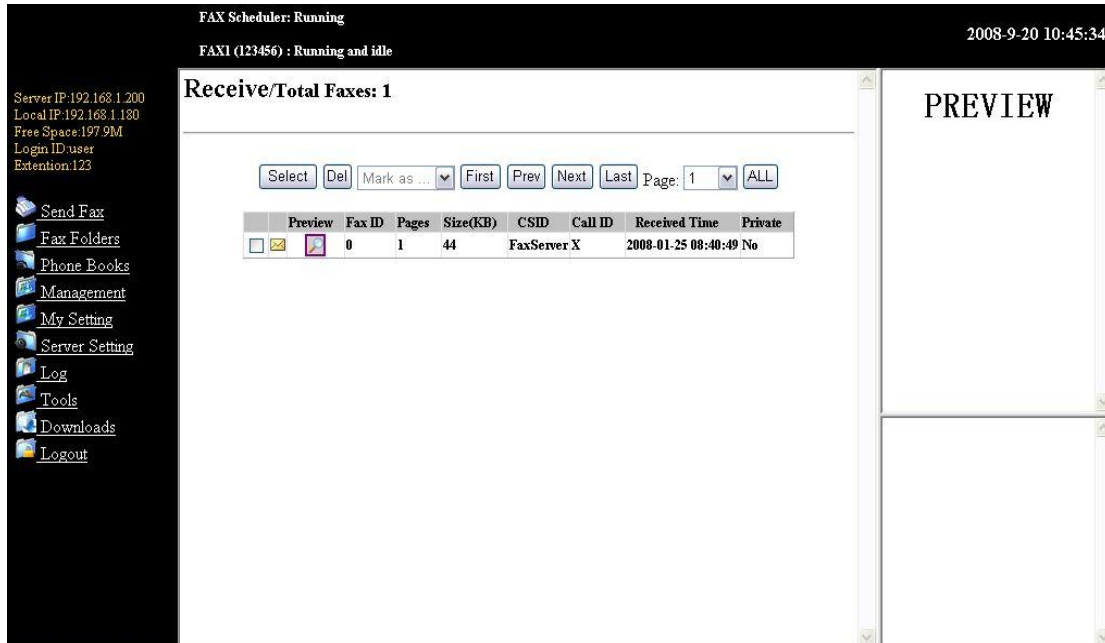
## Line Status:

FAX Scheduler: Running	2008-9-20 10:43:55
FAXI (123456) : Running and idle	

Display the current status

## 2. Main menu

After login, the screen will show the following page



The menu item details :

Menu	Description
<b>Send FAX</b>	Send Fax, Fax Broadcast, Intranet File Forward
<b>Fax Folders</b>	InBox (store the sent and received private or public faxes), OutBox (show the sending fax and fax queue events), SentBox (store your sent fax information).
<b>Phone books</b>	Private Phone Book, Public Phone Book ( for all inner fax server users )
<b>Management</b>	User Management, Department Management
<b>My Setting</b>	Send Preferences (the default setting for send option), My Account (user can modify personal setting)
<b>Server Setting</b>	Network, Line, Voice, Backup, Delete Rules, Time, Language
<b>Log</b>	Fax Queue (list sending and queuing tasks on server), Sent (list sent record), Received (list received record), Distribution (list distribution record) Transmit (list intranet file forward record).
<b>Tools</b>	Server Status, Ping Test, SMTP Test, Files Delete, Parameters Backup, Update, Factory Restore, Reboot
<b>Download</b>	Alternatiff , explorer plug-in download, Print Drivers
<b>Logout</b>	Logout system

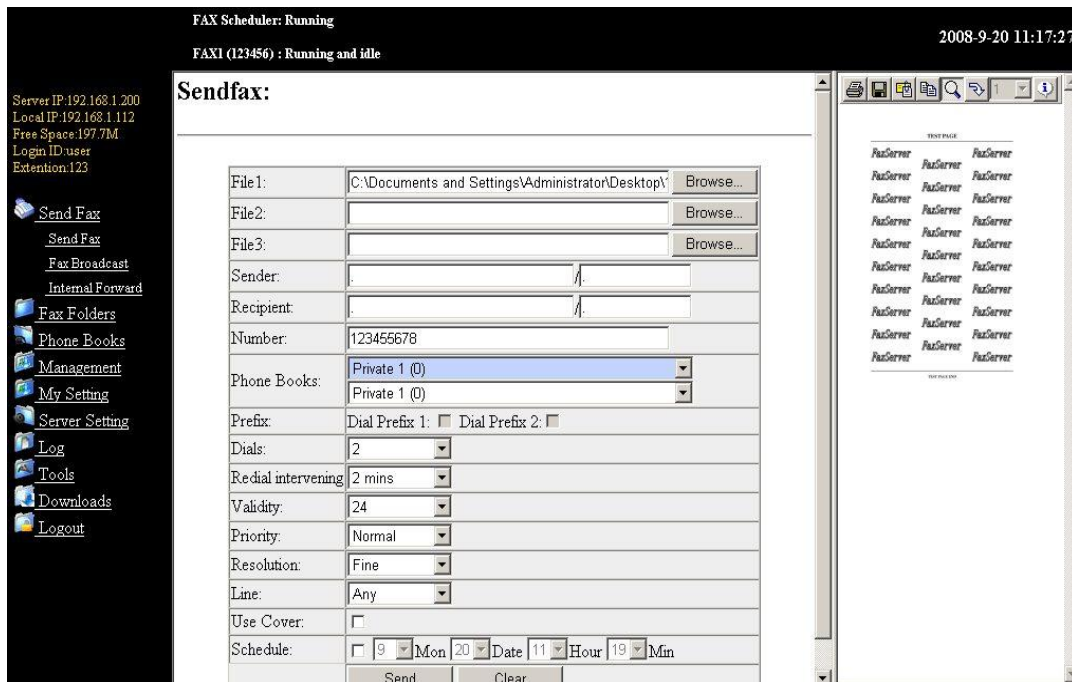


### 3. Send FAX

#### a) Format Conversion

We need to convert the document into tiff format before sending fax. Open the document which you are ready to send, then choose "File" ---->"Print" ---->"Web Printer" (see printer installation in "Download "-----" Web Printer Download"). Document will be saved automatically in "C:\tiff" folder. The new file name="old file name+ month + date + time + minute.tif"

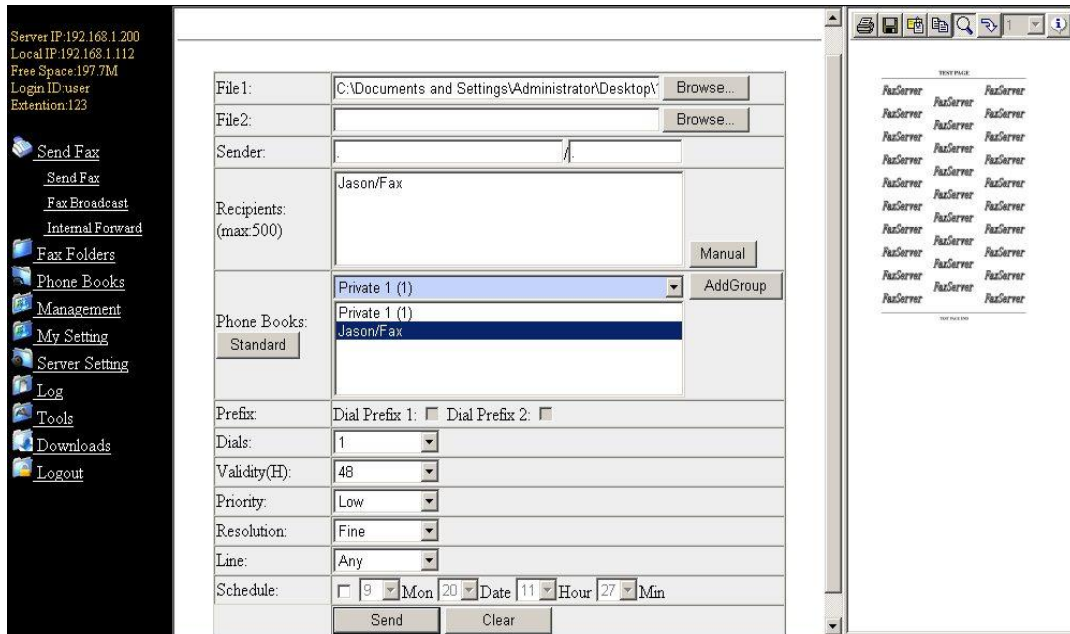
#### b) Send FAX



The menu item details:

Menu	Description	
<b>File1</b>	Click Browse option to select the send file(Tiff & pdf)	send max. 3 files at the same time
<b>File2</b>	Click Browse option to select the send file(Tiff & pdf)	
<b>File3</b>	Click Browse option to select the send file(Tiff & pdf)	
<b>Sender</b>	Sender's company name and sender's name	
<b>Receiver</b>	Recipient's company name and receiver's name	
<b>Number</b>	Recipient fax number	
<b>Phone Books</b>	Select recipient in the list	
<b>Prefix</b>	Select the IP prefix or telephone card	
<b>Dials</b>	The retry times of this fax	
<b>Redial intervenging</b>	Redial interval time	
<b>Validity</b>	The validation time of this fax	
<b>Priority</b>	FAX Priority	Optional : High, Normal, Low
<b>Resolution</b>	FAX Resolution	Optional: Normal, Fine, SuperFine
<b>Line</b>	Select fax line	
<b>Use Cover</b>	Enable fax cover pages	
<b>Schedule</b>	Delay fax send time to the specified time	

## c) Fax Broadcast



The menu item details:

Menu	Description	
<b>File1</b>	Click Browse option to select the send file(TIFF only)	Send Max. 2 files at the same time
<b>File2</b>	Click Browse option to select the send file(TIFF only)	
<b>Sender</b>	Sender's company name and sender's name	
<b>Receivers</b>	It will appear at the tagline	
<b>Phone Books</b>	Select recipient in the list	Submit Max.500 faxes under this model
<b>Prefix</b>	Select the IP prefix or telephone card	
<b>Dials</b>	The retry times of this fax	
<b>Validity(H)</b>	The validation time of this fax	
<b>Priority</b>	FAX Priority.	Optional : High、 Normal、 Low
<b>Resolution</b>	FAX resolution	Optional: Normal、 Fine、 SuperFine
<b>Line</b>	Select fax line	
<b>Schedule</b>	Delay fax send time at a specified time	
<b>Standard</b>	Change submitting model	Submit Max.1000 faxes under this model
<b>Manual</b>	Add one record each time	
<b>AddGroup</b>	Add the current group into fax broadcast group	

**Click Manual:**

		<input type="button" value="Manual"/>
Receipt:	Jason / Fax	
Number:	12345678	<input type="button" value="Add"/>

**Click Standard:**

Server IP:192.168.1.200  
Local IP:192.168.1.112  
Free Space:197.7M  
Login ID:user  
Extension:123

- 
- 
- 
- 
- 
- 
- 
- 
- 
- 
- 
- 
- 

**Fax Broadcast:**

File1:	C:\Documents and Settings\Administrator\Desktop\	<input type="button" value="Browse..."/>
File2:		<input type="button" value="Browse..."/>
Sender:		
Phone Books:	<input checked="" type="radio"/> Private 1 (1) <input type="radio"/> Public 1 (0) <input type="radio"/> Private 2 (0) <input type="radio"/> Public 2 (0) <input type="radio"/> Private 3 (0) <input type="radio"/> Public 3 (0) <input type="radio"/> Private 4 (0) <input type="radio"/> Public 4 (0) <input type="radio"/> Private 5 (0) <input type="radio"/> Public 5 (0)	
Prefix:	Dial Prefix 1: <input type="checkbox"/> Dial Prefix 2: <input type="checkbox"/>	
Dials:	1	
Validity(H):	48	
Priority:	Low	
Resolution:	Fine	
Line:	Any	
Schedule:	<input type="checkbox"/> 9 Mon 20 Date 11 Hour 28 Min	
	<input type="button" value="Send"/> <input type="button" value="Clear"/>	

TEST PAGE

FaxServer FaxServer FaxServer  
 FaxServer FaxServer FaxServer  
 FaxServer FaxServer FaxServer  
 FaxServer FaxServer FaxServer  
 FaxServer FaxServer FaxServer  
 FaxServer FaxServer FaxServer  
 FaxServer FaxServer FaxServer  
 FaxServer FaxServer FaxServer  
 FaxServer FaxServer FaxServer  
 FaxServer FaxServer FaxServer

(Submit Max.1000 faxes under this model)

**d) Internal File Forward**

Server IP:192.168.1.200  
Local IP:192.168.1.112  
Free Space:197.7M  
Login ID:user  
Extension:123

- 
- 
- 
- 
- 
- 
- 
- 
- 
- 
- 
- 
- 

**Internal Forward:**

File:	C:\Documents and Settings\Administrator\Desktop\	<input type="button" value="Browse..."/>
Recipients:	Default/user/user	
Users:	Department/Name/Login ID Default/user/user Default/admin/admin	
	<input type="button" value="Send"/> <input type="button" value="Clear"/>	

The menu item details:

Menu	Description
File	Choose Browse option and select the send file (Format: Any)
Receivers	Display recipient list
Fax Server Users	Choose intranet fax users, click the name and it will be added to the recipient list

## 4. Fax Folders

### a) InBox

The screenshot shows the 'InBox' interface of the eezeeFAX server. At the top, it displays 'FAX Scheduler: Running' and 'FAXI (123456) : Running and idle' with a timestamp of '2008-9-20 10:47:21'. The main area is titled 'Receive/Total Faxes: 1' and contains a table with one entry:

Preview	Fax ID	Pages	Size(KB)	CSID	Call ID	Received Time	Private
<input type="checkbox"/>	0	1	44	FaxServer X		2008-01-25 08:40:49	No

Navigation buttons include 'Select', 'Del', 'Mark as ...', 'First', 'Prev', 'Next', 'Last', and 'Page: 1 ALL'. A sidebar on the left lists various menu items like 'Send Fax', 'Fax Folders', 'InBox', 'OutBox', 'SentBox', 'Phone Books', 'Management', 'My Setting', 'Server Setting', 'Log', 'Tools', 'Downloads', and 'Logout'. On the right, there is a 'TEXT PAGE' section showing a list of 'FaxServer' entries and a detailed view of the selected fax's metadata, including Fax ID, Sender, Pages, Quality, Page size, Received time, and other technical details.

The menu item details:

Menu	Description
Select	Select all or deselect to the selection
Del	Delete the selected fax file
Mark as...	Mark a fax as unread, read or star
First	Return to the first page
Prev	Previous page
Next	Next page
Last	Last page
All	List all fax documents
Note	Click the fax ID to open the fax in a new window Need to install AlternaTIFF and internet explorer plug-in for Preview

**b) OutBox**

Only display the user's own sending and queuing tasks, and the completed tasks will be moved to SentBox

**c) SentBox**

Only display user's own completed faxes (excluding "Intranet File Forward"), this will be kept three days

**5. Phone books (support UTF8)**



**a) Private phone book**

Menu	Description
Select	Select all or deselect to the selection
Add	Add a new telephone record
Clear	Clear the current input information
Delete	Select the corresponding records and click "Delete" button, the telephone records will be deleted
Edit	Select the corresponding records and click "Edit" button, after the completion of edit ,click on "Submit" to store the telephone records changes
All	Display all fax numbers of one phone book
Import	Group import: Press TAB to separate the recipient and fax number

<b>Numbers of Private phone books</b>	<div style="border: 1px solid black; padding: 5px;"> Private 1 ▾  Private 1  Private 2  Private 3  Private 4  Private 5 </div>
---	--

## b) Public phone book

All user can add or delete public phone book in phone number

Server IP:192.168.1.200  
Local IP:192.168.1.112  
Free Space:197.7M  
Login ID:user  
Extension:123

- [Send Fax](#)
- [Fax Folders](#)
- [Phone Books](#)
- [Private Phone Book](#)
- [Public Phone Book](#)
- [Management](#)
- [My Setting](#)
- [Server Setting](#)
- [Log](#)
- [Tools](#)
- [Downloads](#)
- [Logout](#)

[First](#) [Prev](#) [Next](#) [Last](#) Page: 1 [ALL](#) [Public 1](#)

Contact (Co./Name)	FAX

**Operation:**

Co.:

Name:

FAX:

Co.:

Name:

FAX:

The menu item details:

Menu	Description
<b>Select</b>	Select all and deselect to the selection
<b>Add</b>	Add a new telephone records
<b>Clear</b>	clear the current input information
<b>Delete</b>	Select the corresponding records and click "Delete" button, the telephone records will be deleted
<b>Clear</b>	Clear all records in phone book
<b>Edit</b>	Select the corresponding records and click "Edit" button, after the completion of edit ,click on "Submit" to store the telephone records changes
<b>Import</b>	Group import: Press TAB to separate the recipient and fax number

## 6. Management

### a) Dept Manage

Server IP:192.168.1.200  
Local IP:192.168.1.180  
Free Space:197.9M  
Login ID:user  
Extention:123

- Send Fax
- Fax Folders
- Phone Books
- Management
  - Dept Manage
  - User Manage
  - Fax-routing Table
  - Routing Strategy
- My Setting
- Server Setting
- Log
- Tools
- Downloads
- Logout

### Department Manage:

Department	
Default	<input type="checkbox"/>

**Operations:**

Dept:

The menu item details:

Menu	Notes
Select	Select all and deselect to the selection
Add	In "Dept" window, input department name then click the "Add"
Delete	Select the corresponding department and click "Delete" button, the department will be deleted
Modify	Selected a department, click "Modify" to change the department name, click "Submit" to save change, or click "Clear" to cancel modify
Submit	
Clear	

### b) User Manage

Use the system administrator privileges user login to system, click "Management"----"User Manage" open the user manage interface

#### 1) Add User

Input Name、 Department、 Login ID, Ext, Passwords, user rights and email info on the right side of User management pages. After input click "Add" button to save



Basic:

Name:

Department:  ▼

Login ID:

Password:

Confirm:

Ext:

Line:  ▼

Out-going Fax       Server Setting

Internal Forward     Fax Broadcast

Fax Manager

Admin                   Long-distance Fax

SMTP:

Default SMTP:  (Setup in admin)

SMTP Server:

Account:

Password:

FROM:

TO:

Bcc:

Attachment:  ▼

Fax2 Email:  SMTP Test (Simple)

Notify:  SMTP Test (Detail)

SMB (Net Folder):

Default SMB:  (Setup in admin)

Share:

Sub Directory:

Host IP:

Workgroup:

Account:

Password:

Fax2SMB:

NotifyBySMB:

Printer:  ▼

Fax2Print:

NotifyByPrint:

For each user, you can set the following user rights :

Menu	Description
<b>Out-going Fax</b>	User has right to send fax
<b>Server setting</b>	User has right to set server parameter
<b>Internal File Forward</b>	User has right to forward file on a network or through an intranet
<b>Broadcast Fax</b>	User has right to send broadcast fax

<b>Fax Manager</b>	User has right to receive public fax	
<b>Signature</b>	User has right to sign on the fax	
<b>Administrator</b>	User has right to manage user's and department's faxes	
<b>Long-distance Fax</b>	User has right to dial the fax number with the prefix of 0 or 1	
<b>Default SMTP</b>	Fax Server supports setting the value of "SMTP Server", "Account", "Password" and "FROM" with admin account as the default SMTP setting for other users.	
<b>SMTP Server</b>	Input the domain or IP address of SMTP server	e.g. smtp.host.com
<b>Account</b>	Input sender's e-mail accounts	
<b>Password</b>	Input sender's e-mail login password	
<b>FROM</b>	Full path of E-mail Address	
<b>TO</b>	Input E-mail address to receive fax	
<b>Bcc</b>	Send blind carbon copies to list, List should be a comma-separated list of names.	
<b>Attachment</b>	Email received format	
<b>Fax2Email</b>	Enable fax to Email	
<b>Notify By Email</b>	E-mail informs user of done or failed transmission	
<b>SMTP Test (Simple)</b>	Start SMTP Test, test result without test log	
<b>SMTP Test (Detail)</b>	Start SMTP Test, test result with detail test log	

Menu	Description
<b>Default SMB</b>	Select Default SMB, then other users share the admin's setup
<b>*Share</b>	Specified Share Root Directory (Required information), Ensure share path is with ASCII characters and no blank
<b>Sub Directory</b>	Specify Sub Directory of the Share Directory, under Root Directory. If Sub Directory is not existed, it will be generated automatically.
<b>*Host IP</b>	Specify the Share Server's IP(TCP/IP4) address
<b>Workgroup</b>	Specify the workgroup, if no workgroup to be

	managed, it allows be blank.
<b>Account</b>	The account of the specified Share Server <b>Note: This account requests permissions for the share folder</b>
<b>Password</b>	The password of the specified Share Server
<b>Fax2SMB</b>	Enable the share function of SMB
<b>NotifyBySMB</b>	Allows to auto-store the received or sent faxes to any one share folder over LAN
<b>SMB Test</b>	For test. Ensure setup is right, and click <b>SMB Test</b> , Fax server will auto-generate a test paper in the specified share directory

## 2) Delete User

Select the corresponding user and click "Delete" button, the user will be deleted

## 3) Edit User

Select a user then click "Modify" button to modify the user info

## c) Fax-routing Table

### Fax-routing Table:

**Fax-routing Table:**

Account:   Line:

Account	Line
---------	------

The definition of line routing, fax identifier routing (CSID) and telephone number routing (CID):

Menu	Description
<b>Line Routing</b>	Route all incoming faxes of "FAX1" or "FAX2" to specify the user
<b>CSID Routing</b>	Route all matched CSID faxes to specify the user
<b>CID Routing</b>	Route all matched CID faxes to specify the user

d) Routing Strategy

## Routing Strategy:

Line: FAX1

**Routing Strategy:** Priority

Save

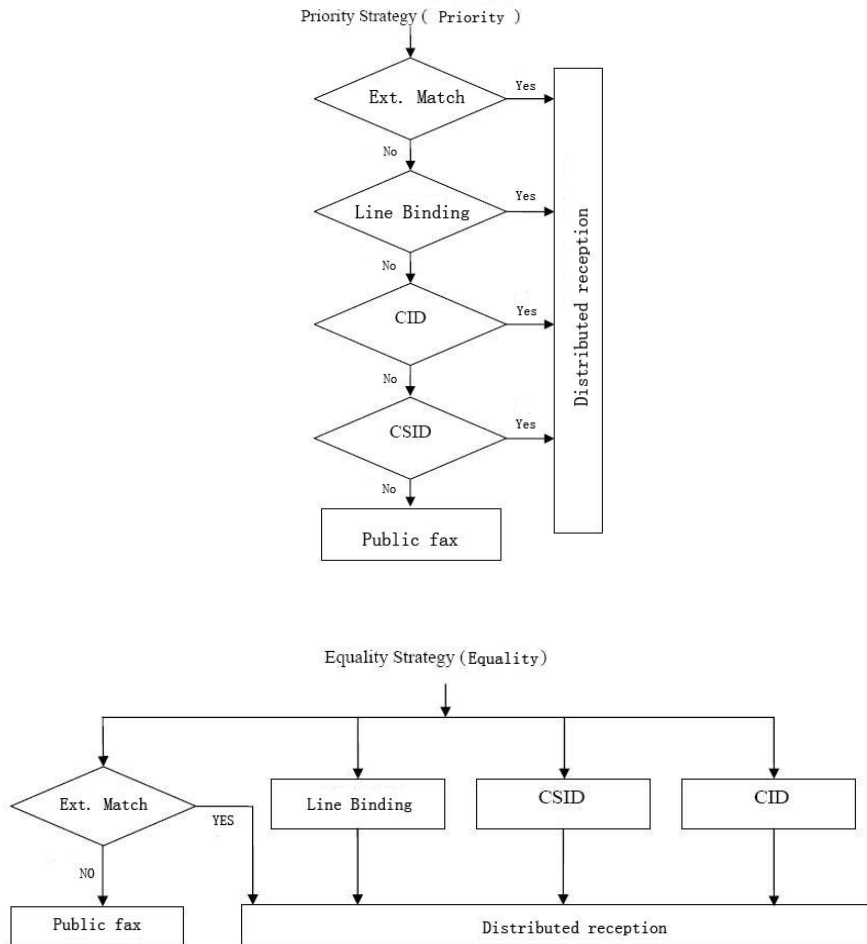
Priority  
Equality  
Extention-first

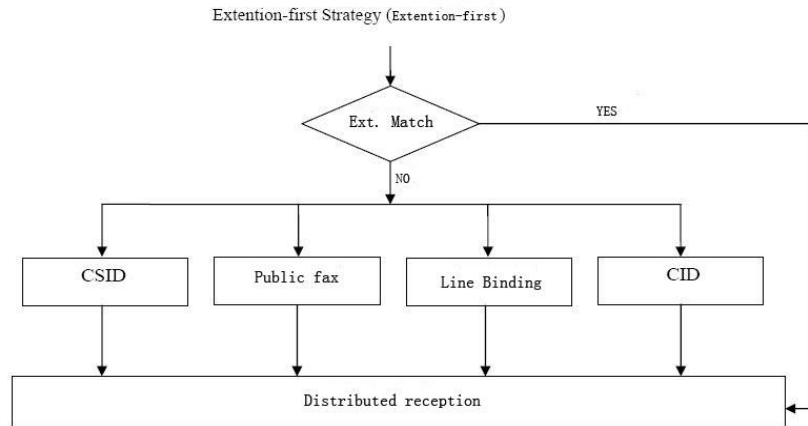
Line-routing  
CSID-routing  
CID-routing

Selected:  
Ext-routing

Priority++  
Priority--

The strategy of incoming fax routing: priority strategy, parity strategy, ext. priority strategy





## 7. My Setting



### a) Send Preferences

Sender:	sender company name	/ sender
Dial Prefix 1:	<input type="text"/>	
Dial Prefix 2:	<input type="text"/>	
<b>Send Fax:</b>		
Dials:	3	▼
Retries:	2	▼
Validity:	24	▼
Priority:	Normal	▼
Resolution:	Fine	▼
<b>Fax Broadcast:</b>		
Dials:	1	▼
Retries:	1	▼
Validity:	48	▼
Priority:	Low	▼
Resolution:	Fine	▼
Advertising:	Fax Server	
TagLine format:	Recipient first ▼	
<input type="button" value="Save"/>		<input type="button" value="Clear"/>

The menu item details:

Menu	Description	
Sender	Sender's company name and sender's name	
Dial Prefix 1	Input dial prefix 1	
Dial Prefix 2	Input dial prefix 2	
Dials	Dial times	
Retries	Retry times	
Priority	Fax priority	Options : High, Normal, Low
Validity	The validation times of this fax	
Resolution	Fax resolutions	Options: Normal, Fine, SuperFine
Advertising	Input advertising words and will be displayed at the header	
TagLine format	Display the recipient firstly or sender firstly	

## b) My Account

**My Account:**

Name:  Department:

Login ID:

Password:  Confirm:

Ext:  Line:

---

**Priviege:**

Out-going Fax     Fax Server Parameter Setting

Internal Forward     Fax Broadcast

Fax Manager

Admin                     Send Long-distance Fax

---

**SMTP:**

Default SMTP:

SMTP Server:

Account:

Password:

FROM:

TO:

Bcc:

Attachment:

Fax2Email:

Notify:

**SMB (Net Folder):**

Default SMB:  (Setup in admin)

Share:

Sub Directory:

Host IP:

Workgroup:

Account:

Password:

Fax2SMB:

NotifyBySMB:

---

Printer:

Fax2Print:

NotifyByPrint:

The menu item details:

Menu	Description
<b>SMTP Server</b>	Input the domain or IP address of SMTP server e.g. smtp.host.com
<b>Account</b>	Input sender's e-mail account
<b>Password</b>	Input sender's e-mail login password
<b>FROM</b>	Full path of E-mail Address
<b>TO</b>	Input e-mail address to receive fax
<b>Attachment</b>	Email received format
<b>Fax2Email</b>	Enable fax to email
<b>Notify By Email</b>	Notice by email after sending fax

## 8. Server Setting

### a) Network

Bind IPs:

IP Address 1:

SubnetMask 1:

IP Address 2:

SubnetMask 2:

IP Address 3:

SubnetMask 3:

Gateway:

DNS Address 1:

DNS Address 2:

Web Port:

No ping response:

DHCP-Client Enable:

Menu	Description	
<b>Bind IPs</b>	Choose IP address quantities 1-3	Maximum 3 IP address. Each IP address must be unique
<b>IP Address</b> 1、 2、 3	Input the first IP address	
<b>SubnetMask</b> 1、 2、 3	Input the first IP network subnet mask	
<b>Gateway</b>	Input the gateway IP address	
<b>DNS Address 1</b>	Input the preferred DNS server	
<b>DNS Address 2</b>	Input the alternate DNS server	
<b>Web Port</b>	Input the web page port	Default: 80
<b>No ping response</b>	Disable ping response	
<b>DHCP-Client Enable</b>	Get network configuration from DHCP server ( Linux suggested )	



## b) Line

Visit the line page and modify the parameters of fax server. Each fax line has its setting, such as "Dial Rules", "Receiving Parameter", "Sending Parameter", "Identifier" and "Line Control"

<b>Dial Rules</b>	Country Code:	<input type="text" value="852"/>	Area Code:	<input type="text"/>
	National Prefix:	<input type="text" value="0"/>	International Prefix:	<input type="text" value="00"/>
	Out-line Prefix:	<input type="text"/>	Dialtone Detect:	<input checked="" type="checkbox"/>
<b>Receiving Param</b>	Max Pages:	<input type="text" value="25"/>	Rings:	<input type="text" value="2"/>
	Receiving Voice(DID):	<input type="checkbox"/>	Volume:	<input type="text" value="Default"/>
	Play Times:	<input type="text" value="1"/>	CID Mode:	<input type="text" value="FSK"/>
<b>Sending Param</b>	Sending Voice:	<input type="checkbox"/>	Volume:	<input type="text" value="Default"/>
	Tagline:	<input checked="" type="checkbox"/>		
<b>Identifier</b>	Fax Number:	<input type="text" value="123456"/>	CSID (ASCII):	<input type="text" value="FaxServer"/>
	Extension:	<input type="text" value="3"/>	Extension Required:	<input type="checkbox"/>
	Prefix Strip:	<input type="text" value="0"/>	Suffix Strip:	<input type="text" value="0"/>
	DID Debugging:	<input type="checkbox"/>		
<b>Line Control</b>	Function:	<input type="radio"/> Receive Only <input checked="" type="radio"/> Send & Receive		
	Priority:	<input type="text" value="Default"/>		
<b>Fax Mode</b>	Class1			

**Notes:** Only the user has setting right can visit and modify line setting

Menu	Description	
<b>Dial Rules</b>	Country code, area code, national prefix, out-line prefix, Dial tone Detect, if your telephone line is connected with PBX, input dial prefix at "Out-line Prefix"	
<b>Receiving Param</b>	Max Page	Maximum received page
	Rings	Set ring times for picking up

	Received Voice	Enable voice notice
	Play Times	The times of playing voice
	CID Mode	Call ID mode, FSK/DTMF
	Volume	Select play volume
<b>Sending Param</b>	Sending Voice	Enable voice prompt
	Volume	Select play volume
	Tagline	Enable display page heading information in each fax page
<b>Identifier</b>	Fax Number	Input the fax line number on the top of the page
	Identifier	Input the local CSID
	Extension(digit)	Extension number
	Prefix Strip	Extension number=Prefix Strip + Available Extension number + Suffix Strip. Prefix Strip and Suffix Strip will be cut after extension input. Generally, set the Prefix Strip and Suffix Strip as 0.
	Suffix Strip	
	Extension Required	When checked, a correct extension is required for each in-coming call, or else the fax server will inject the call and hand up.
DID Debugging	DID debugging mode, when checked, there will be a link to the report.	
<b>Line Control</b>	IO	Set only receive or both send and receive
	Priority	The scheduling priority to use for a line, if ready
<b>To Class2</b>	Use class2 fax mode	

### c) Voice Setting

Voice Language:

Update:

Note: Receiving voice named play1.raw  
 Sending voice named play2.raw  
 Error voice named play3.raw

The menu item details:

Menu	Description
Voice Language	Select voice language
Update	Upload voice file to server

Default Voice:

Voice Type	File Name	Size	Content
Receiver voice	play1.raw	41 K	Welcome, please dial extension number or press start for fax
Sending voice	play2.raw	28 K	Please press start for receiving fax
Error voice	Play3.raw	36 K	Sorry, the extension number doesn't exist , please redial

### d) Dialrules

Dial string processing rules.( please click "Help" for detail )

```
! $Id: dialrules
!
! Dialing String Processing Rules.
!
! This file describes how to process user-specified dialing strings
! to create two items:
!
! CanonicalNumber: a unique string that is derived from all dialing
! strings to the same destination phone number. This string is used
! by the fax server for 'naming' the destination.
!
! DialString: the string passed to the modem for use in dialing the
! telephone. This string should be void of any characters that might
! confuse the modem.
!
Area=${AreaCode}           ! local area code
Country=${CountryCode}     ! local country code
IDPrefix=${InternationalPrefix} ! prefix for placing an international call
LDPrefix=${LongDistancePrefix} ! prefix for placing a long distance call
!
```

## e) Email2fax

Enable:

SSL Connection:  (not supported)

POP3 Server:

Email Account:

Email Password:

Confirm:

Validation Code:

Cycle:  ▼

The actual Email can be composed in this way:

1. Attach a tif file as the fax body;
2. Send the email with a subject of the following formats:
  - A. validation code,account,sender,recipient@number
  - B. validation code,account,sender,recipient1@number1,recipient2@number2,recipient3@number3..
  - C. „sender,recipient@number
3. The validation code can be empty if it's not required. The account field is not required, only if you want to receive a notification by email. And no matter the validation code or the account is present or not, the delimiter "," is required.

### Note:

**The Email Account should be a new Email account for Email2fax only, instead of any other purposes, because Email2fax function will remove all emails in the inbox, no matter they are suitable for Email2fax or not.**

Menu	Description
Enable	Enable email2fax
SSL Connection	<i>(not supported)</i>
POP3 Server	Input the domain or IP address of POP3 server
Email Account	Input sender's e-mail accounts
Email Password	Input sender's e-mail login password
Confirm	Confirm password
Validation Code	Optional
Cycle	Check for new messages periodically
POP3 Verify	Verify POP3 account setting
Email2fax Now	Retrieve email from mailbox

f) Backup

Enable:

Backup Host:

Install the provided backup software to enable fax backup function. Then input the computer name in the backup host field

Menu	Description	
Enable	Disable	Disable fax backup
	Enable (Each User)	Backup single user's sent and received faxes
	Enable(Each Fax)	Backup all users' sent and received faxes
Backup Host	Input the name of the computer used for backup	

g) Delete rules

Days to keep fax files:

Days to keep temp files:

Time to execute rules:

Menu	Description
Days for keeping fax files	All user's received faxes storage period in a fax server
Days for keeping temp files	Temp files storage period in a fax server
Time to execute rules	The execute times for above two rules

## h) Time Setting

Server time: 2009-1-12 10:25:05

Local time: 2009-1-12 10:25:40

Year	Mon	Date	Hour	Min	Sec	Timezone
2009	1	12	10	25	4	UTC

Click "Sync" button to match PC time. Please choose a correct time if manual setup, then click "Save" to modify the fax server time.

## i) Language Setting

Default Language:

The web interface language supports multiple languages.

## j) Remote Printer

Local Name	Printer Model	Default Printer	Accepting Jobs	Printer Status	Pending Jobs
------------	---------------	-----------------	----------------	----------------	--------------

Local Name:

Set As Default:

Direct TCP Connection:  Port:   
 Unix IPP Server:  Printer:   
 Network SMB Server:  Printer:   
Account:  Password:

Select the printer driver:

Or provide another PPD:

May get it here: <http://www.cups.org/ppd.php>

Menu	Description
Local Name	Name of printer. User-defined
Printer Model	Indicate printer model
Default Printer	Set it as default printer
Accepting Jobs	Indicate status of the printer, <b>Yes</b> means it is available to accept jobs
Printer State	Indicate status of the printer, <b>Idle</b> means it is available, while <b>Stop</b> means it is unavailable
Pending Jobs	The quantities of tasks waiting for print
Print Test	Print test paper
Cancel Jobs	Cancel the selected jobs waiting for print
Delete Printer	Delete the selected printer
Accept Jobs	Setup the selected printer as accepting jobs status again
Reject Jobs	Setup the selected printer as reject jobs status
Start Printer	Setup the selected printer as Stop status again
Stop Printer	Setup the printer as Stop status
Direct TCP Connection	HP JetDirect Connection technology via TCP. Connect printer to internet directly
UnixIPP Server	Base on Internet Printing Protocol
Network SMB Server	Input Share server's IP address. Windows Sharing or Linux Samba Sharing
Port	User-defined Sharing Printer's Port
Printer	Input the Share name of the Sharing Printer. Case sensitive
Account	Input account information
Password	Input password information
Select the printer driver	Select the right printer driver
Or provide another PPD	User-defined printer driver
May get it here	If there is no matched printer driver from "Select the printer driver" drop down list, please get it from here <a href="http://www.cups.org/ppd.php">http://www.cups.org/ppd.php</a>



## 9. Log and task list

### a) Events

With Events log, administrator can monitor event records in users' operations and system log

Page: 1

Time	Event	IP Address	UserID	Username	Department
2008-04-03 14:30:27	Send Fax	192.168.0.180	test	test	Sales
2008-04-03 14:09:00	Login	192.168.0.180	test	test	Sales
2008-04-03 13:50:08	Login	192.168.0.173	jason	JasonChow	TechService
2008-04-03 11:33:33	Login	192.168.0.173	jason	JasonChow	TechService
2008-04-03 11:33:26	Logout	192.168.0.173	jason	JasonChow	TechService
2008-04-03 11:33:24	Department Management	192.168.0.173	jason	JasonChow	TechService
2008-04-03 11:33:01	Login	192.168.0.173	jason	JasonChow	TechService
2008-04-03 11:32:55	Logout	192.168.0.173	jason	JasonChow	TechService
2008-04-03 11:32:28	Department Management	192.168.0.173	jason	JasonChow	TechService
2008-04-03 09:54:12	Login	192.168.0.173	jason	JasonChow	TechService

### b) Fax Queue

Display all users' sending tasks and queuing tasks, the system administrator can delete the selected fax task.

### c) Sent

Display all users' sent fax records, the list can be exported and be stored.



## d) Received

Display all received fax records, the list can be exported and be stored, all records can be cleared.

FAX Scheduler: Running  
FAXI (123456) : Running and idle  
2008-9-20 11:07:22

Server IP:192.168.1.200  
Local IP:192.168.1.180  
Free Space:197.8M  
Login ID:user  
Extension:123

Send Fax  
Fax Folders  
Phone Books  
Management  
My Setting  
Server Setting  
Log  
Events  
Fax Queue  
Sent  
Received  
Distribution  
Transmit  
Tools  
Downloads  
Logout

### Received Log/Total faxes:1

First Prev Next Last Page: 1 Clear Export... Download...

FaxID	CSID	Number	Ext	Received Time	TimeToRecv	Line	Speed	Format	Pages	Size(KB)	Quality	CommID
1000	JasonMobile			2008-09-20:11:06:22	0:55	FAX1	14400 bit/s	1-D MH	1	73	Fine	000000005

## e) Distribution Log

Display all users' received fax distribution records, the list can be exported and be stored. All records can be cleared.

FAX Scheduler: Running  
FAXI (123456) : Running and idle  
2008-9-20 11:07:58

Server IP:192.168.1.200  
Local IP:192.168.1.180  
Free Space:197.8M  
Login ID:user  
Extension:123

Send Fax  
Fax Folders  
Phone Books  
Management  
My Setting  
Server Setting  
Log  
Events  
Fax Queue  
Sent  
Received  
Distribution  
Transmit  
Tools  
Downloads  
Logout

### Distribution Log:

First Prev Next Last Page: 1 Clear Export... Download...

FaxID	Recipient	Received Time	CSID	Number	Pages	Fax2Email
1000	user	2008-09-20:11:06:22	JasonMobile		1	NA

## f) Transmit

Display the transfer records of all users' intranet files.

FAX Scheduler: Running  
2008-9-20 11:08:52  
FAX1 (123456) : Running and idle

Server IP:192.168.1.200  
Local IP:192.168.1.180  
Free Space:197.8M  
Login ID:user  
Extention:123

Send Fax  
Fax Folders  
Phone Books  
Management  
My Setting  
Server Setting  
Log  
Events  
Fax Queue  
Sent  
Received  
Distribution  
Transmit  
Tools  
Downloads  
Logout

### Internal Forward Log:

First Prev Next Last Page: 1 Clear Export...

Time	Sender	Recipient	Size(KB)	Filename
2008-09-20 11:08:49	user	user	43	en.test.fax.tif

## 10. Tools

### a) Server Status

This web interface displays server relative information

## Server Info:

### Basic Info:

Serial Numbers:	450809****_****
Firmware:	fs15175
MAC:	00:60:6e:4E3d:e8

### Storage:

Capacity	Used	Remaining	Used%
251.0M	53.2M	197.8M	21%

### User Storage:

Login ID	Faxes	Used
admin	0	2.0k
user	1	46.0k

## b) Ping Test

Input the destination IP address to ping IP

Destination:

```

PING 192.168.0.180 (192.168.0.180): 56 data bytes
64 bytes from 192.168.0.180: icmp_seq=0 ttl=64 time=1.2 ms
64 bytes from 192.168.0.180: icmp_seq=1 ttl=64 time=0.5 ms
    
```

```

--- 192.168.0.180 ping statistics ---
2 packets transmitted, 2 packets received, 0% packet loss
round-trip min/avg/max = 0.5/0.8/1.2 ms
    
```

## c) SMTP Test

SMTP server test

### SMTP Test:

---

SMTP\*:  e.g. smtp.domain1.com

ACCT:  e.g. sender or sender@domain1.com

PWD:

FROM\*:  e.g. sender@domain1.com or Signature<sender@domain1.com>

TO\*:  e.g. recipient1@domain1.com,recipient2@domain2.com

Bcc:  e.g. recipient3@domain3.com,recipient4@domain4.com

Subject:

DMESG:  (Wait for debugging messages)

Menu	Description
<b>SMTP</b>	Input the domain or IP address of SMTP server
<b>USER</b>	Input sender's e-mail account
<b>PASS</b>	Input sender's e-mail login password
<b>FROM</b>	Full path of E-mail Address
<b>TO</b>	Input e-mail address to receive fax
<b>SUBJECT</b>	Email Subject
<b>DMESG</b>	Wait for debug message
<b>EXEC</b>	Execute this test

### d) Files Delete

Delete Fax Files:

Delete Temp Files:

The menu item details:

Menu	Description	
Delete Fax Files	Delete all users' or single user's fax in the fax server	
Delete Temp Files	Fax Cache	Delete temporary fax document
	Fax Log	Delete temporary fax log file
	Numbers	Delete temporary fax number file
	Done Log	Delete temporary send info

### e) Parameters Backup

This web interface shows: Server parameters backup and server parameters restore.

Parameters backup

Parameters restore

### f) Update

This web interface shows how to upgrade system firmware. The update files should be gotten from service provider

Current Firmware: mf25173  
 \*Upload package:

#### Warning:

It may take several minutes, and fax service will be stopped during the update. The fax server will reboot automatically when finished.

### g) Factory Restore

This web interface shows how to restore the factory settings, including: user's info, server setting, fax log, line setting, fax server IP will resume: 192.168.1.200.

Please use cautiously!

### h) Reboot

Click "Confirm" to reboot the fax server



## 11. Downloads



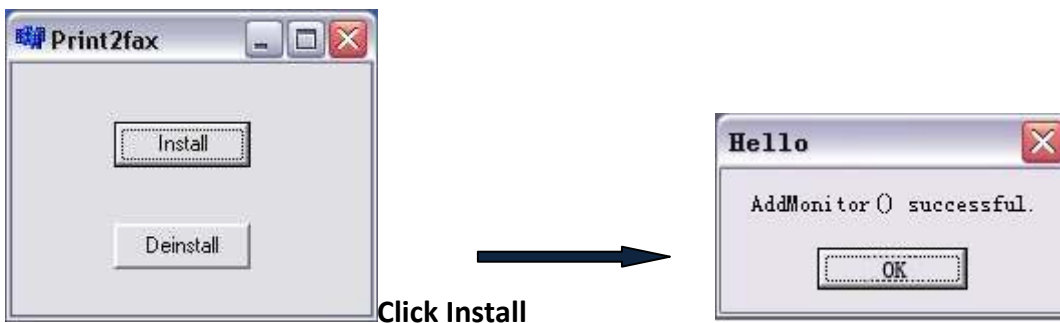
### a) Alternatiff

User needs to install "AlternaTIFF ActiveX control" to preview the TIFF file. Download AlternaTIFF ActiveX control on "Download "---->" Alternatiff", or download it from <http://www.alternatiff.com> ,AlternaTIFF control tools contains: print, store to disk, copy, proper window width, fixed size, direction, opposite display, page control, menu and so on

	Preview	Fax ID	Pages	Size(KB)	CSID	Call ID	Received Time	Private
<input type="checkbox"/>		5318	1	16	85301102	85395991	2008-09-02 10:00:44	No

### b) Print Drivers

Download Print2Fax on "Download "---->"Print Drivers", then download "Print2fax.zip"  
 Print2fax is a Windows print monitor designed to send its output directly to a Fax Server. Once installed, you can print to a Fax Server from any application, and it will pop up a simple dialog box, allowing you to enter the destination FAX number. It's not intended to be fancy or all encompassing, just a quick and easy way to send fax from any Windows application



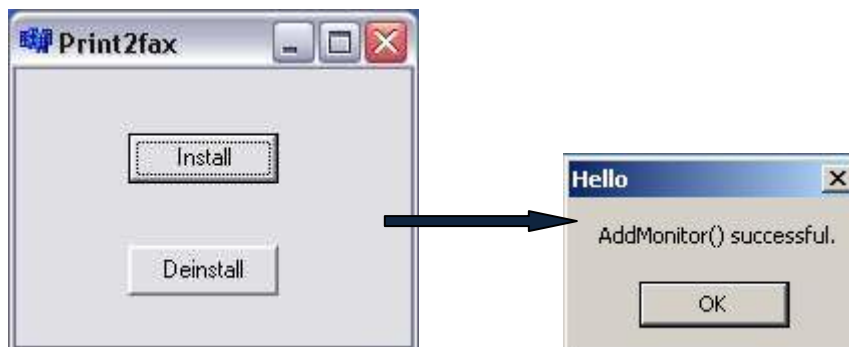
It is packaged in the form of a Windows Installer, which installs the required sets of .DLL files and registers the monitor with the system. This adds support for a new type of port to your system, called a "Print2fax Port." Once you've successfully installed the files, setup is straightforward, but it has a number of steps

Please refer to Print2fax.zip user guide during installation

## c) Print2fax user's guide

Print2fax is a Windows print monitor designed to send its output directly to a Fax Server. Once installed, you can print to a Fax Server from any application, and it will pop up a simple dialog box, allowing you to enter the destination FAX number. It's not intended to be fancy or all encompassing, just a quick and easy way to send FAXes from any Windows application

### Print2fax installation:



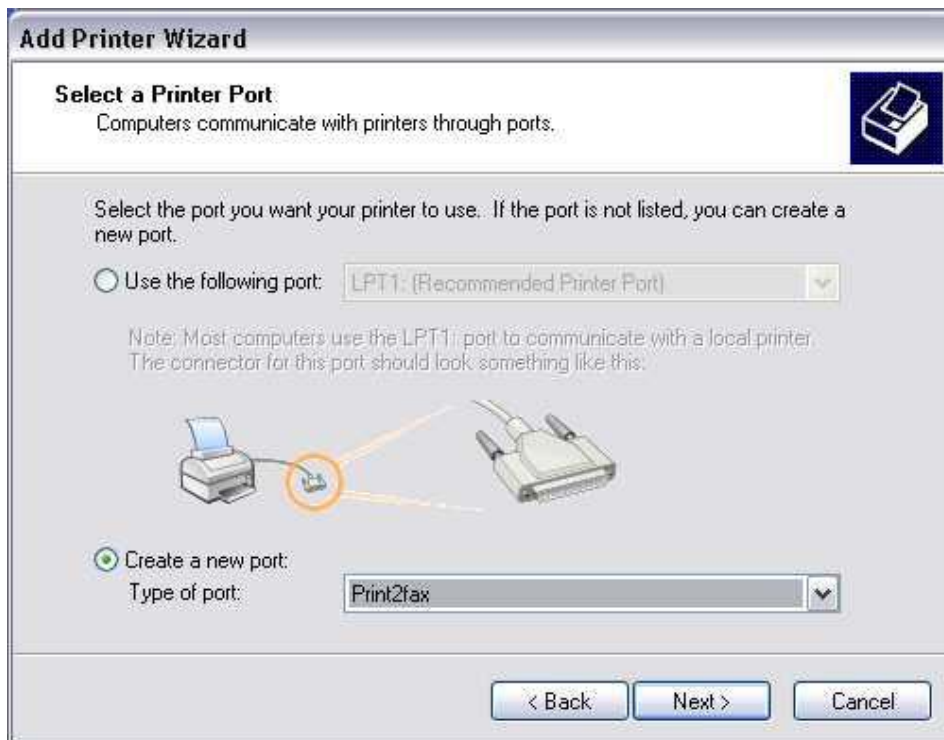
It is packaged in the form of a Windows Installer, which installs the required sets of .DLL files and registers the monitor with the system. This adds support for a new type of port to your system, called a "Print2fax Port." Once you've successfully installed the files, setup is straightforward, but it has a number of steps. First, you'll want to create an appropriate PostScript printer using the "Add Printer" button. You want to select a "Local printer," but since it's not a physical printer, uncheck the "Automatically detect and install my Plug and Play printer" box.



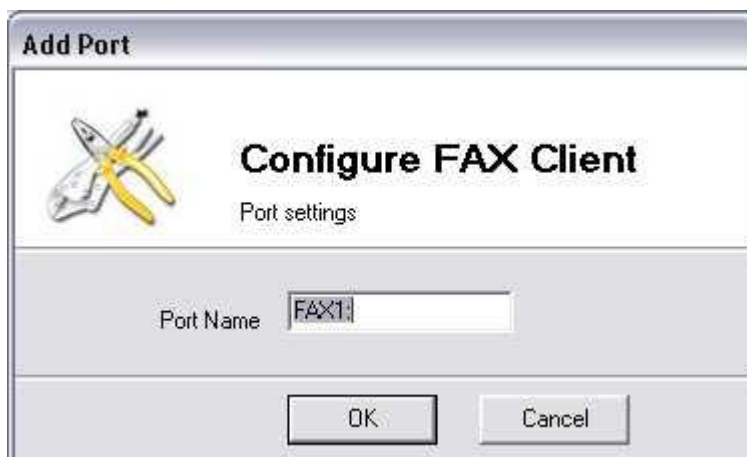


Next, you'll be asked what port to use. Select the radio button "create a new port type." If the installation went well, you should see "Print2fax" as one of the options. The drop list might scroll, so it may not be obvious that it's at the bottom of the list. (If it doesn't appear on the list at all, something went wrong with your installation.)





Next, a box will pop up for you to name the port. The name doesn't actually matter, but naming it FAX1: will help to identify it.

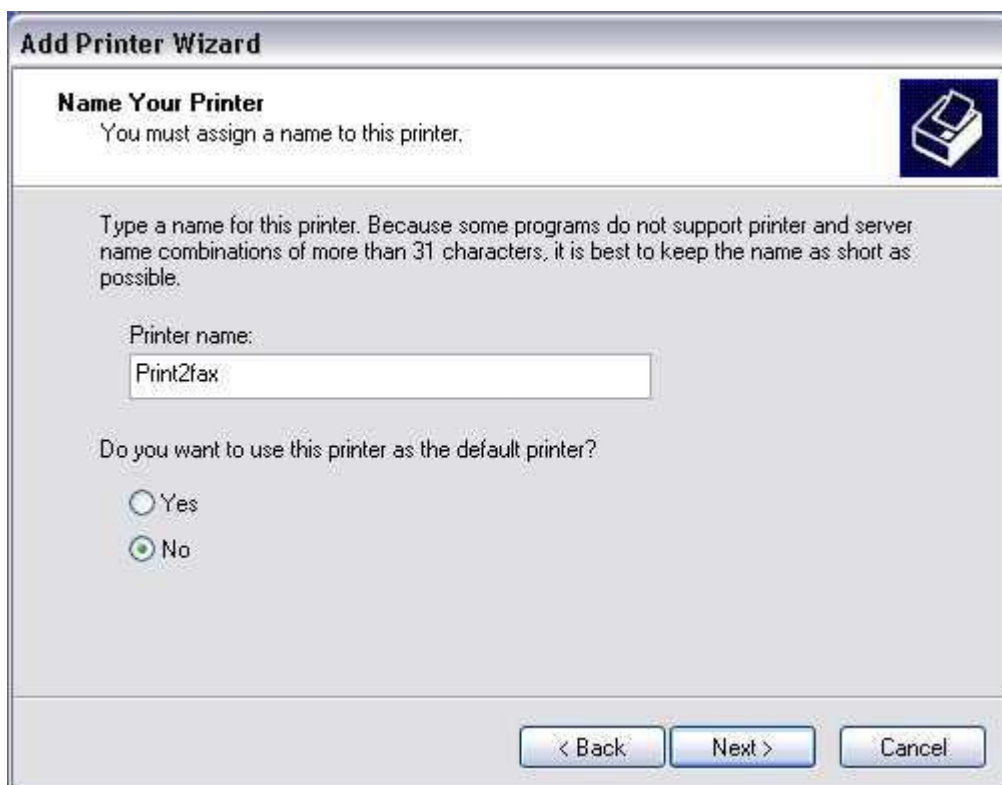


Next, select the printer type. Experience has shown that the "Apple LaserWriter 12/640 PS" and the "Canon C LBP 360PS" are good choices, and I recommend them. Most any other PostScript printer will probably work.





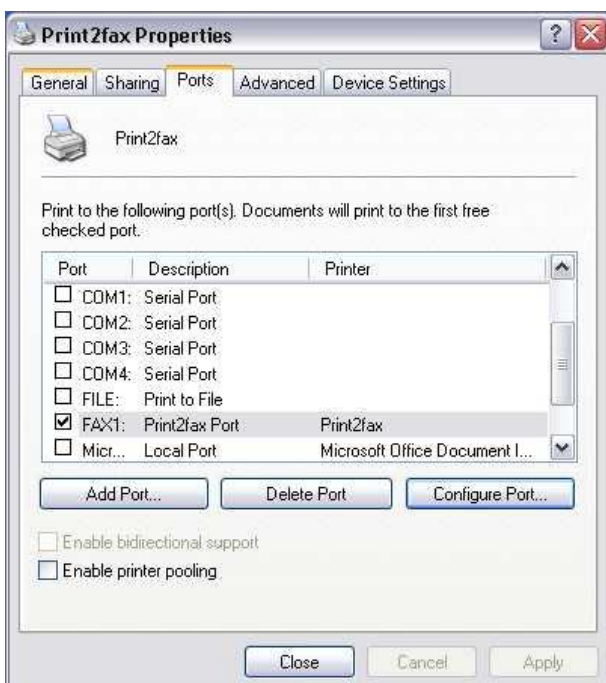
Of course, name it whatever you want, but we suggest to call it "Print2fax "





Do not share the printer. This is rather silly anyway, since you can locally install Print2fax on any system that needs it, and it communicates directly with the Fax Server. Since it pops up the dialog box asking where to send the FAX job locally, this would be ugly, at best. Also, don't print a test page, since you're not done configuring the printer yet.

Right-click on the printer to call up its properties, and select the "Ports" tab. Locate the port you just created.



Press the "Configure Port" button to configure the connection to your Fax Server.

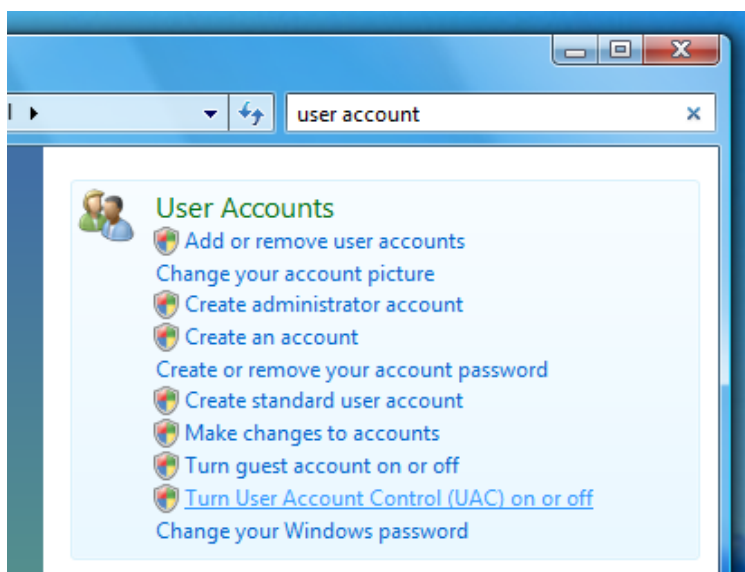
Most people who have problems are going to have problems because their Fax Server won't let them connect. Break out your Fax Server documentation, and make sure that you have set up the correct permissions. Okay, now you're ready to print a test job. When you send anything to this printer, a dialog box will appear:

The FAX number is completely unedited and unverified. It relies on Fax Server's dialing rules to make sense of it.

**Note:**

If your OS is Windows Vista, before creating a new port of "Print2fax", UAC should be turned off the following way:

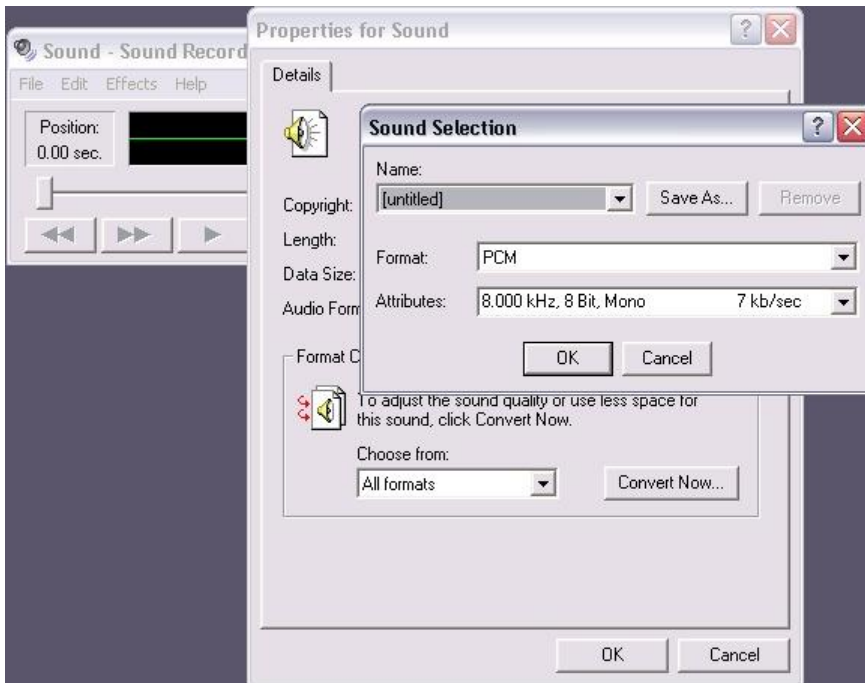
1. Click Start, and then click Control Panel.
2. In Control Panel, click User Accounts.
3. In the User Accounts window, click User Accounts.
4. In the User Accounts tasks window, click Turn User Account Control on or off.
5. If UAC is currently configured in Admin Approval Mode, the User Account Control message appears. Click Continue.
6. Clear the Use User Account Control (UAC) to help protect your computer check box, and then click OK.
7. Click Restart Now to apply the change right away, or click Restart Later and close the User Accounts tasks window.



**d) Voice recording**

Please use windows "Sound Recorder" to record the voice file. The file format: PCM attributes: 8000 kHz, 8, mono.

Saving format: play\*.raw



Receiving voice named: play1.raw

Sending voice named: play2.raw

Error voice named: play3.raw

## 12. Appendix (the default)

### a) Network and Time Default

IP Address 1 :	<b>192.168.1.200</b>	Router Address :	<b>192.168.1.1</b>
Subnet Mask 1 :	<b>255.255.255.0</b>	DNS Address 1 :	<b>203.90.224.11</b>
IP Address 2 :	<b>0.0.0.0</b>	DNS Address 2 :	<b>127.0.0.1</b>
Subnet Mask 2 :	<b>255.255.255.0</b>		
IP Address 3 :	<b>0.0.0.0</b>		
Subnet Mask 3 :	<b>255.255.255.0</b>		

### b) Line Setting

Dial Rules	Country Code :	<b>852</b>	Receiving Param	Max. Pages	<b>25</b>
	Area Code :	<b>None</b>		Receiving Voice	<b>No</b>
	National Prefix :	<b>0</b>		Rings	<b>2</b>
	International Prefix :	<b>00</b>	Identifier	Fax Number	<b>123456</b>
	Out-line Prefix :	<b>None</b>		Identifier	<b>Fax Server</b>
	Extention(digit)	<b>3</b>		Prefix	<b>0</b>
				Suffix	<b>0</b>

**c) Default User**

System default users	Default password	Competence
admin	123456	System administrators
user	123456	Default user

**d) Voice document default**

Voice Type	File Name	Size	Content
Receiver voice	play1.raw	41K	Welcome, please dial extension number or press start for fax
Sending voice	play2.raw	28K	Please press start for receiving fax
Error voice	Play3.raw	36K	Sorry, the extension number doesn't exist , please redial