

SMART POWER - 4L

Remote Control Surveillance Management System

Operation Manual



INDEX

| | |
|---|-----------|
| 一、PRODUCT INTRODUCTION | 1 |
| 1-1 RANGE OF APPLICATION | 1 |
| 1-2 MONITORING INDICATING CHART..... | 2 |
| 1-3 PRODUCT FEATURES | 3 |
| 1-4 HARDWARE ENVIRONMENTAL EXPLANATION..... | 4 |
| 1-5 POWER ENVIRONMENTAL EXPLANATION..... | 5 |
| 1-6 HARDWARE INSTALLATION | 5 |
| 1-7 PRODUCT PACKAGING | 6 |
| 二、WEBPAGE OPERATION | 7 |
| 2-1 ONLINE SETUP..... | 7 |
| 2-2 NETWORK SETUP..... | 8 |
| 2-3 TIME SYNCHRONIZATION..... | 10 |
| 2-4 POWER MONITOR | 11 |
| 2-4-1 Power Switch Setup | 11 |
| 2-4-2 Power Switch Operation | 12 |
| 三、ADVANCEMENT SETUP | 13 |
| 3-1 POWER MONITOR | 13 |
| 3-1-1 Warning Temperature Setup..... | 13 |
| 3-1-2 Power Operation | 14 |
| 3-1-3 Power Configuration Setup..... | 14 |
| 3-1-4 Working Schedule | 15 |
| 3-1-5 Network Detect | 15 |
| 3-1-6 Temperature Monitor | 16 |
| 3-1-7 Voice File Sending | 17 |
| 3-2 SYSTEM SETUP..... | 17 |
| 3-2-1 Network Setup..... | 17 |
| 3-2-2 Email Server Setup..... | 19 |
| 3-2-3 Message Server Setup | 20 |
| 3-2-4 SNMP Setup..... | 21 |
| 3-2-5 Other Setups..... | 22 |
| 3-3 ACCOUNT MANAGEMENT | 22 |
| 3-3-1 Account Add | 23 |
| 3-3-2 Account Delete..... | 24 |
| 3-4 TIME SIMULTANEITY..... | 25 |

| | |
|--|-----------|
| 3-5 EVENT RECORD | 26 |
| 3-6 FIRMWARE UPGRADE | 27 |
| 3-6-1 Firmware Upgrade | 27 |
| 3-6-2 Download / Reset Configuration..... | 28 |
| 四 、 PHONETIC OPERATION PROCEDURE..... | 31 |
| 4-1 MAIN PROCEDURE..... | 32 |
| 4-2 POWER CONTROL PROCEDURE | 33 |
| ATTACHMENT (A): HOW TO RETURN SMARTPOWER SETUP TO INITIAL VALUE. | 34 |
| ATTACHMENT(B): HOW TO USE TAPE RECORDER TO RECORD EQUIPMENT VOICE FILE..... | 35 |

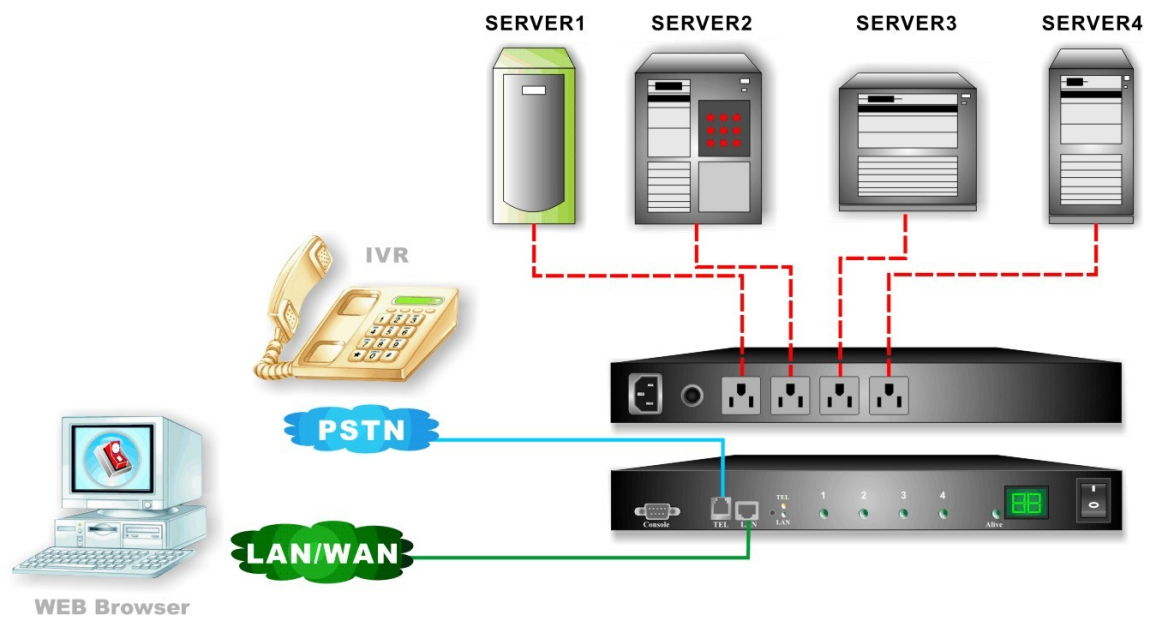
一、Product Introduction

The MIS personnel of lots of enterprises, after coming back to the office because of the network or the computer equipment system halted during their vacations, often find that only needs to reboot the power to solve the problem. So SmartPower integrates the power control, the electric current monitor, equipment temperature control , UPS control , webpage management , voice control, messages, E-mail and API function to let MIS personnel learn the power state of the equipment as soon as possible and can deal with the relevant problem with voice or network far to solve the problem. It reduces the enterprise's losses as well as saves MIS personnel's traveling time.

1-1 Range of Application

- ✚ The monitoring and management of the computer equipment room.
- ✚ The power management of the computer centers of every organization.
- ✚ The machinery equipment power control of the factory building.
- ✚ The network equipment power monitoring.
- ✚ Other power equipment power monitoring.

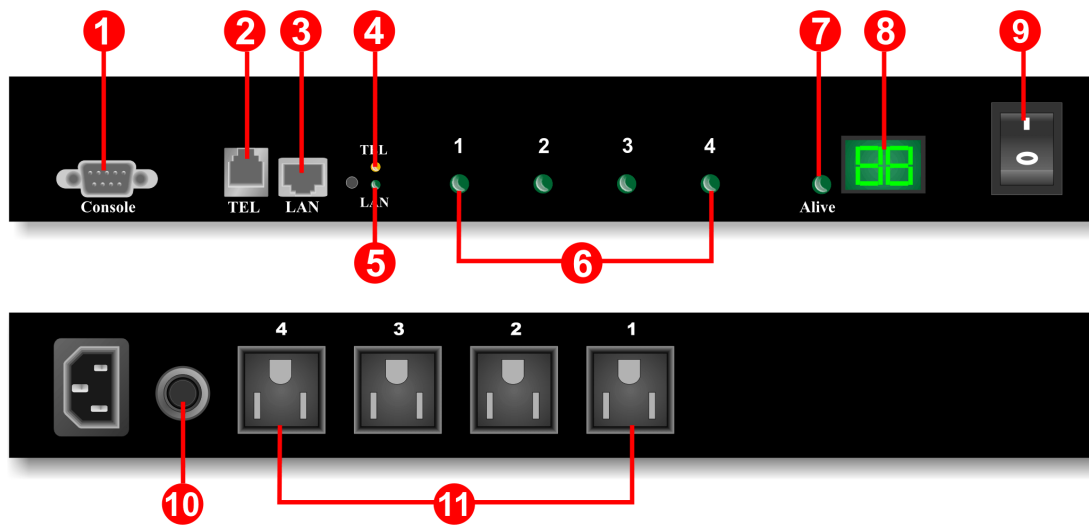
1-2 Monitoring Indicating Chart



1-3 Product Features

- ✚ Control Power Switch of Remote Equipment via network or phone voice to replace the presence of the personnel.
- ✚ LED panel to inspect total current.
- ✚ It is equipped with overloading electric breaking protector to avoid overloading to cause device damage.
- ✚ Auto on / off power switch with surrounding temp. by bulid-in temp. Sensor.
- ✚ Execute Power On / Off / Reboot via Console to manage its performance.
- ✚ Support Power Start sequence setting to prevent all of switches from starting simultaneously to cause sudden overloading and effect equipment working.
- ✚ Provide 4 sets of accounts and passwords for your own setting to manage different power switches.
- ✚ Pre-set Switch Start Time and arrange the working schedule for power supply.
- ✚ By brief message and email warning to practice the instant surveillance and warning to important equipment.
- ✚ Record the user's operating message and abnormal message to provide the user to check the case afterwards.
- ✚ Provide API interface. The manager can develop the control software by himself.
- ✚ Provide remote net firmware to renew the function.

1-4 Hardware Environmental Explanation

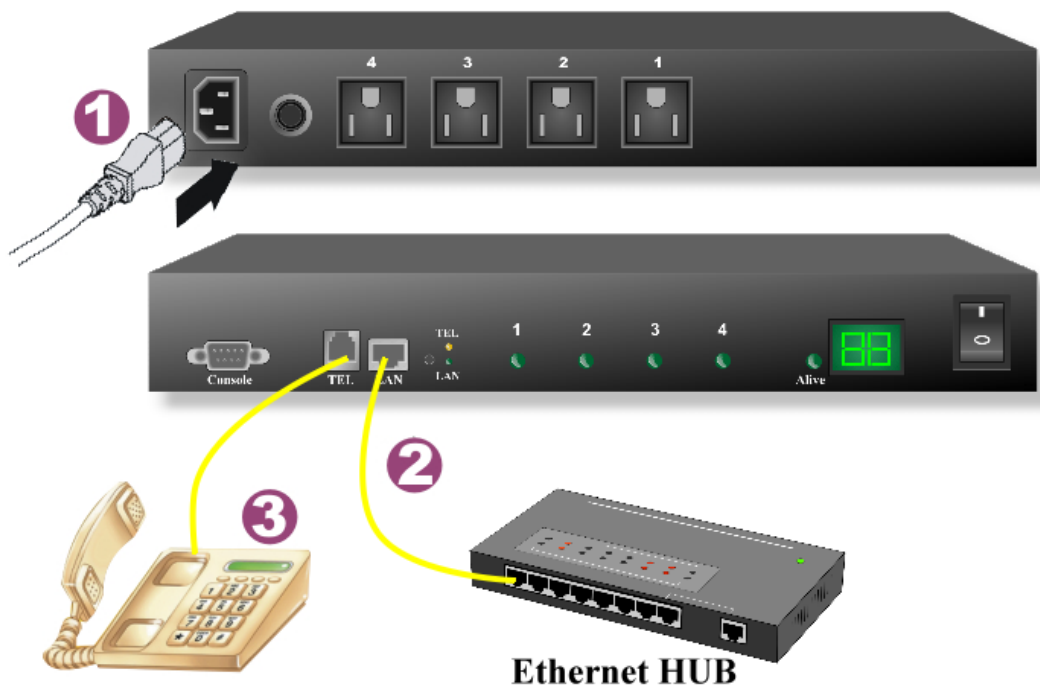


| | | | |
|----------|-------------------------------|-----------|---------------------------------|
| 1 | Console Connect Port (RS232) | 7 | Device running Indicating Light |
| 2 | Phone Line Connect Port | 8 | Total Current Indication |
| 3 | RJ45 Network Connect Port | 9 | Main Power Switch |
| 4 | Phone Indicating Light | 10 | Breaker Protector |
| 5 | Network Indicating Light | 11 | Power Switch Socket |
| 6 | Power Switch Indicating Light | | |

1-5 Power Environmental Explanation

| | |
|--------------------------|-------------------------------|
| Power Socket | NEMA-15R |
| Max. Main Output Current | 15 Amp |
| Power Input | 85~264VAC 47~63Hz |
| Power Frequency | 50 - 60 HZ |
| Operating Temp. | 0 – 60 °C |
| Shape Size | 332 x 153 x 44 mm (W x D x H) |
| Machine Net Weight | 1.6 KG |
| Consumption Efficiency | 7 W |

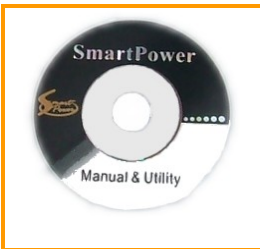
1-6 Hardware Installation



1-7 Product Packaging



Remote Power Monitor * 1



CD Rom of User's Manual * 1



Power Supply Cord * 1

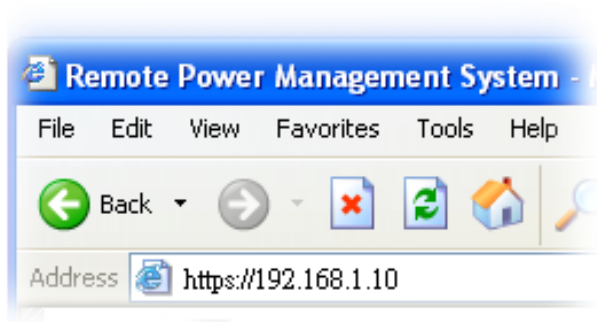
If any of the above accessories are missed or can't be used, please contact with the location you purchased for replacement in 7 days.

二、Webpage Operation

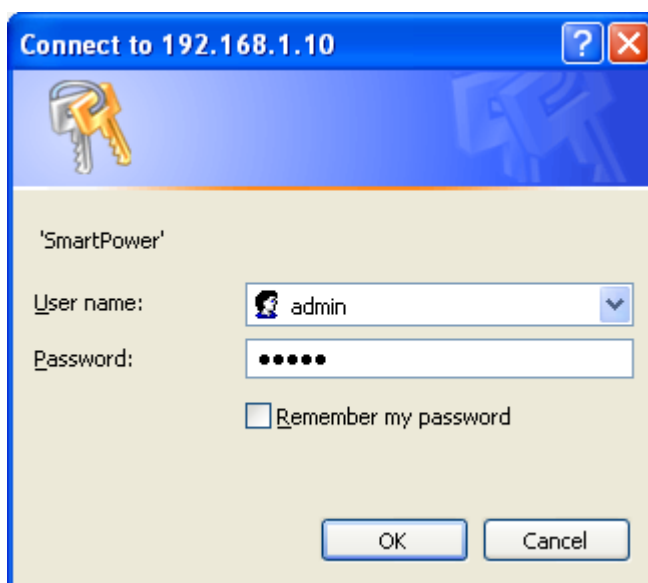
In this Chapter, you can learn how to setup network data , equipment time, power basic data and how to operate power switch via network quickly.

2-1 Online Setup

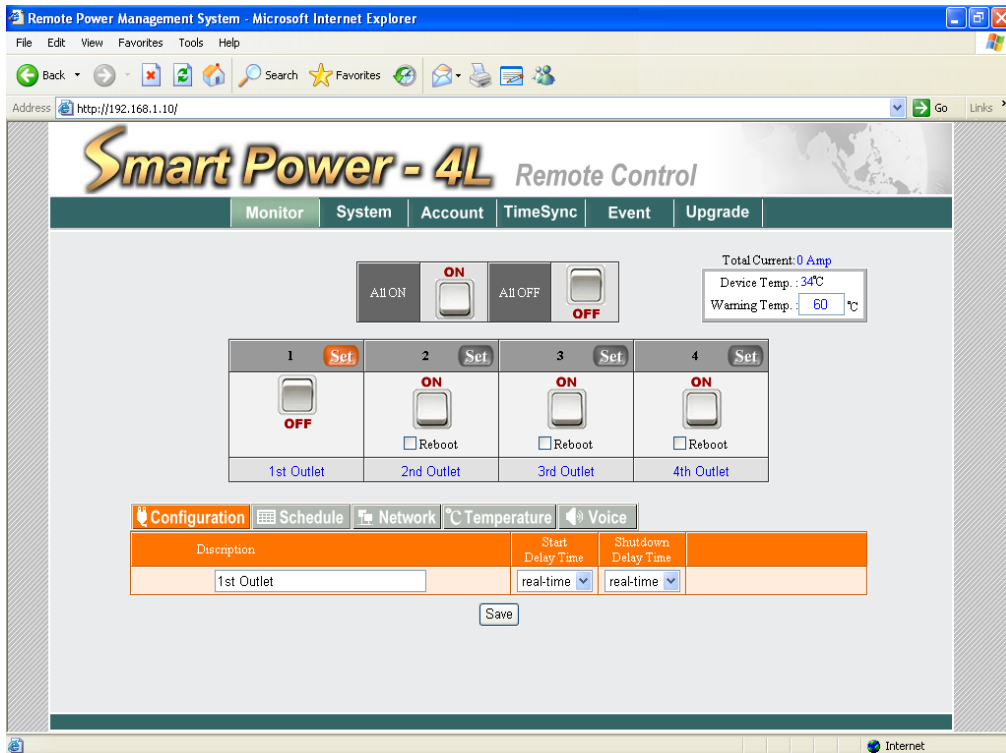
- ① After line, make sure to input <https://192.168.1.10> to connect with webpage manager.



- ② After the logging screen appears, please key in “admin” as user’s name and key in “admin” in the blank of password.



- ③ When you key in the correct user's name and password as the instruction of Step ②, you can enter this screen.



2-2 Network Setup

After you select function 【System】 in homepage, choose 【Network】 .

| Network | Mail Server | SMS Server | SNMP |
|---------------------------------|-------------------------------------|-------------------------------------|------|
| Network Setup | | | |
| 1 | IP Address | 192.168.1.10 | |
| | Subnet Mask | 255.255.255.0 | |
| | Gateway | 192.168.1.1 | |
| Domain Name Server Setup | | | |
| 2 | DNS Server 1 | 168.95.1.1 | |
| | DNS Server 2 | | |
| Web Server Setup | | | |
| 3 | Http Port Open | <input checked="" type="checkbox"/> | |
| | Http Port | 80 | |
| | Http SSL port | 443 | |
| | API port | 12345 | |
| 4 | <input type="button" value="Save"/> | | |

1 Network Setup

Please fill in IP site, sub network shade, preset communication gate data offered by the service center of the supplier according to your network setup state to input the data. If you don't have relevant data on hand , please inquire to your ISP service center. This product only provides for the establishment of regular IP. If your connect type to surf the Net is by dialing, please cooperate to use with IP Hub.

2 Domain Name Server Setup

Please fill in your DNS server provided by ISP service center. You can setup two sets of DNS servers. If you don't know DNS server site, you may check your DNS service by input C : \>nslookup in "Subsidiary application program →Order prompted character.

```
C:\>nslookup
Default Server:  dns.hinet.net
Address:  168.95.1.1
> _
```

3 Web Server Setup

When you connect with SmartPower through webpage browser (e.g. IE), if you do not want to use the decided HTTPS connect port (normally for 443), you may change HTTPS connect port to be other value (e.g. 8080), and then you may re-connect to SmartPower and input the HTTP connect port you appointed. (e.g. https://192.168.1.10:8080)

4 When you finish setup for the above data, please make sure to press the key of 「 Save 」 to store all of the data setup.

2-3 Time Synchronization

The time zone that SmartPower adopts is for 24 hours, and will regard this time as the time basis that information will be recorded. When you use for the first time, you can choose【TimeSync】from function form in webpage. After selecting, you can proceed the setup of time synchronization.

| Equipment Time | |
|-----------------------------|------------|
| Equipment Date (yyyy-mm-dd) | 2006-03-20 |
| Equipment Time (hh:mm:ss) | 15:45:07 |

| System Time | |
|---|--|
| <input checked="" type="radio"/> Sync with PC | |
| PC Date (yyyy-mm-dd) | 2006-03-20 |
| PC Time (hh:mm:ss) | 15:45:07 |
| <input type="radio"/> Sync with NTP Server | |
| NTP Server Address | time.stdtime.gov.tw <input type="button" value="New"/> |
| Time Zone | : GMT + 08 : 00 |
| <input type="radio"/> Manual Setup | |
| Date (yyyy-mm-dd) | 2006-03-20 |
| Time (hh:mm:ss) | 15:45:00 |

Equipment Time Setup is divided into three types. Please choose one to setup as you want :

- Sync with PC :
SmartPower will setup the time of equipment system as the computer date and time display as in the webpage.
- Sync with NTP Server :
Please choose to setup the same time as Server first, and then point out your local time. Please note this time area is relative to “Greenwich” time.

- Manual Setup :

You may also setup SmartPower system time by manual. Just keyin the date and time you want to setup in the columns of Date and Time.

* When you finish setup for the above data, please make sure to press the key of 「 Save 」 to store all of the data setup.

2-4 Power Monitor

After setup the above Webpage, you can choose 【Monitor】 in Webpage Management Function List. In this page, you may not only operate Power Switch but also setup the relative data in every route of Power Equipment.

2-4-1 Power Switch Setup

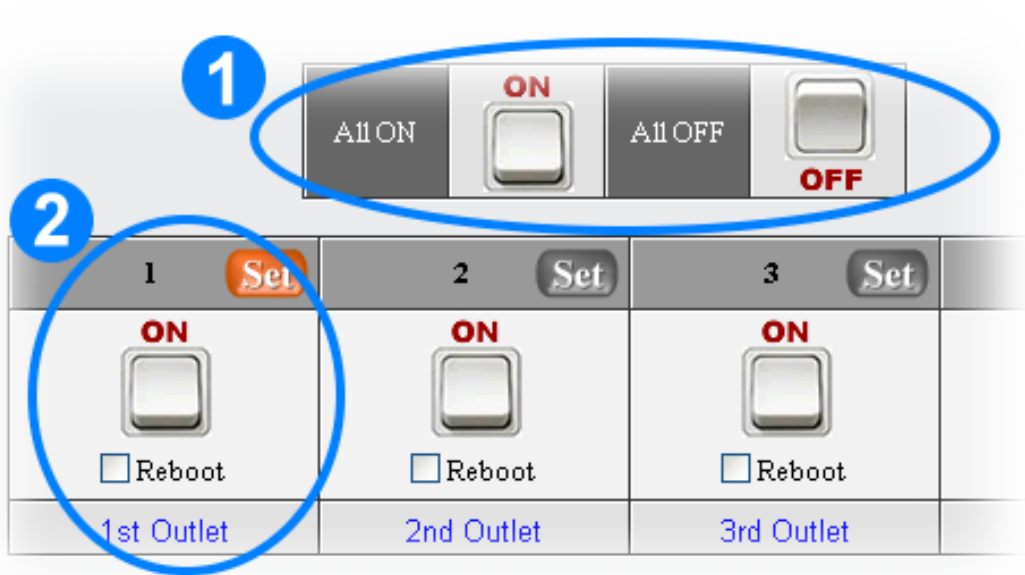
The screenshot displays the Power Switch Setup interface. At the top, there are 'All ON' and 'All OFF' buttons, and a temperature monitoring section showing 'Total Current: 0 Amp', 'Device Temp.: 34°C', and 'Warning Temp.: 60 °C'. Below this is a table with 4 columns for outlets. Column 1 is 'OFF' with a 'Set' button circled in blue and labeled '1'. Column 2 is 'ON' with a 'Reboot' checkbox. Column 3 is 'ON' with a 'Reboot' checkbox. Column 4 is 'ON' with a 'Reboot' checkbox. Below the table is a configuration table with columns for 'Discription', 'Start Delay Time', and 'Shutdown Delay Time'. The 'Discription' column has '1st Outlet' circled in blue and labeled '2'. The 'Start Delay Time' and 'Shutdown Delay Time' columns have 'real-time' dropdown menus. A 'Save' button is circled in red and labeled '3'.

① When you press 「 Set 」 button to turn orange, it means you will setup that Power data.

② Move Mouse to the explanation colum of Power Setup and keyin the explanation date of this Route Power Equipment.

③ When you finish setup for the above data, please make sure to press the key of 「 Save 」 to store all of the data setup.

2-4-2 Power Switch Operation



- 1** Press left key of Mouse twice to open or close all of the Equipment Power.
- 2** Display all route Power Status and Data, and may use Mouse to press its left key twice to switch the Power. If you want to reboot the equipment, please mark the item "Reboot" and then use Mouse to press left key twice.

≡ 、 Advancement Setup

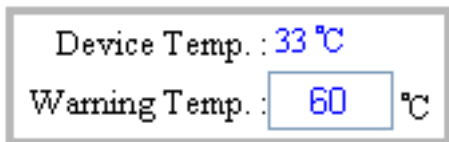
This chapter is mainly to explain the advancement operation in SmartPower webpage. You may learn about Power Monitor, System Setup, Account Management, Time Synchronization, Event Record and Firmware Upgrade...the detailed explanation for all of these functions.

3-1 Power Monitor

In this webpage, you may proceed the setup for Basic Data, Working Schedule, Network Detect, Temperature Monitor through browser operation for power switch and Voice Sending...

3-1-1 Warning Temperature Setup

This block is to display the total current , present device temperature and setup the warning temperature.



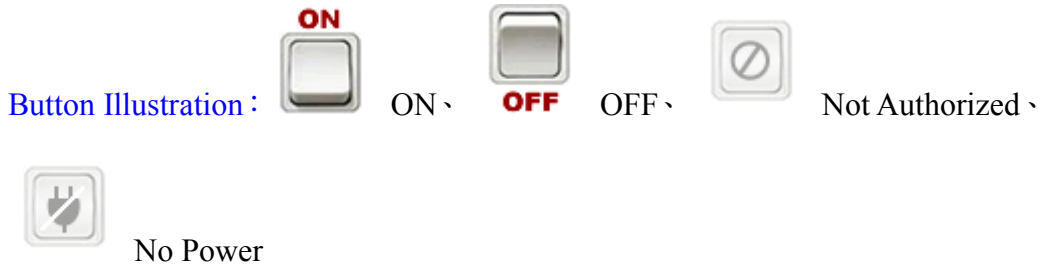
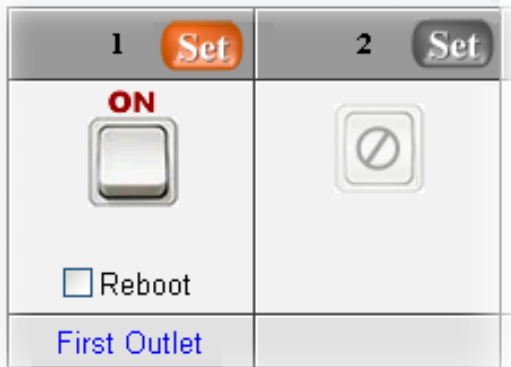
Device Temperature : Display the current temperature of SmartPower. Temperature will change according to the surrounding temperature. If the environment temperature rises, the temperature of SmartPower will rise too.

Warning Temperature : If you connect temperature detector to setup a basic warning temperature, when the equipment temperature rises to this temperature, the system will send the warning message by setup email and message to all of the user's accounts.

* When you finish setup for the above data, please make sure to press the key of 「 Save 」 to store all of the data setup.

3-1-2 Power Operation

Every route power provides the explanation for Power Data Setup, Power ON, Power OFF, Power Reboot, and Power Equipment.



3-1-3 Power Configuration Setup

The main purpose for Power Set List is to setup the relative data for all routes' power switches.

| Configuration | | | |
|---------------|------------------|---------------------|--|
| Schedule | | Network | |
| Temperature | | Voice | |
| Discription | Start Delay Time | Shutdown Delay Time | |
| 1st Outlet | real-time | real-time | |

Discription : The discription for all routes of Power Switch equipment, after setup, it will reveal under switch column for convenience of the manager to distinguish the equipment name connected with all routes' power.

Start Delay Time : When Power is ON, it is time to wait for Power Start Delay Time.

Shutdown Delay Time : When Power is OFF, it is time to wait for Power Shutdown Delay Time.

3-1-4 Working Schedule

You may select the working schedule for setup the power equipment ON or OFF here.

| Recurrence | Time | Action | Delete |
|------------|--------------|--------|--------|
| Week | Sunday 00:08 | Off | X |
| Daily | 09:09 | Reboot | X |

Recurrence: : :

Recurrence : you can select the action recurrence of this route's power. The recurrence can be divided into year, month, week, day. For example, If the recurrence is by "day", it means this route's power will activate at set time each day.

Time : Setup the working time of this route's power. It is dragged to the page bottom.

Action : Setup this route's power's working schedule is "on", "off" or "reboot".

Delete : If you want to delete this schedule, please double-press the deleting illustration of this schedule.

3-1-5 Network Detect

When the Power Connected equipment is the web equipment, you can setup the monitored web equipment site, monitoring interval time, detective numbers of times, reboot or not and re-detect time.

| Detect | Equipment Network Address | PING Interval Time | Detect Times | Reboot | Re-detect Time |
|--------------------------|---------------------------|--------------------|--------------|--------------------------|----------------|
| <input type="checkbox"/> | 192.168.1.10 | 5 Min | 3 | <input type="checkbox"/> | 10 Min |

Detect : When the Power connected equipment is the web equipment, whether detect or not.

Equipment Network Address : When the Power connected equipment is the web equipment, it is the monitored web equipment site.

PING Interval Time : When the Power connected equipment is web equipment, it is the Interval Time to execute PING network equipment.

Detect Times : When PING failed detecting time is over this setup value, it will send the warning message through the set message or email.

Reboot : When PING failed detecting time is over this setup value, whether the web equipment shall be re-started or not.

Re-detect Time : When re-start the web equipment, delay the equipment time and then re-monitor the web equipment.

3-1-6 Temperature Monitor

When detect the temperature of SmartPower is abnormal, is it necessary to proceed the action of open or close the power switch?

| Configuration | Schedule | Network | Temperature | Voice |
|----------------|----------|-----------------|-------------|-------------|
| Power Shutdown | | Continuous Time | | Power Start |
| 50 °C | | 10 Sec | | 40 °C |

Power Shutdown : When the equipment power temperature is over than the setup temperature, if it exceeds the continuous time, the route of power will be close automatically.

Continuous Time:When the temperature of equipment power is over than the setup temperature for power off, if it is over the setup continuous time, this route power will be close automatically.

Power Start : If the equipment power had been close because of high temperature, when the temperature is lower than the setup temperature, this route power equipment will re-start automatically.

3-1-7 Voice File Sending

The user can record the voice file by sending to point out the equipment name for present power switch connected when operate by phone.



Press 「 BROWSE 」 button to open File Select window and choose the voice file you will send, and then press 「 Begin Upload 」 .

The Voice File Form is PCM/A-Law/u-Law 8K 8Bit and less than 40K (about 5 seconds).

In regards to the recording operation for Voice File, please refer to [Attachment B](#).

3-2 System Setup

In this webpage you may setup telephone answering numbers, web basic data, email server and message service... setup for all of the relative data.

3-2-1 Network Setup

Setup Network basic data.

| Network Setup | |
|--------------------------|-------------------------------------|
| IP Address | 192.168.1.10 |
| Subnet Mask | 255.255.255.0 |
| Gateway | 192.168.1.1 |
| Domain Name Server Setup | |
| DNS Server 1 | 168.95.1.1 |
| DNS Server 2 | |
| Web Server Setup | |
| Http Port Open | <input checked="" type="checkbox"/> |
| Http Port | 80 |
| Http SSL port | 443 |
| API port | 12345 |

IP Address : Setup to connect with Network IP address of this equipment.

Subnet Mask : Setup Network mask of this equipment.

Gateway : Setup exterior Gateway Site of this equipment.

DNS Server 1 : The site of the first Web Area Server.

DNS Server 2 : The site of the second Web Area Server.

Http Port Open : Marking this column means that allow user can open browser to connect the device by http protocol.

Http Port : Provide the browser to be connected with the appointed Http port to this equipment.

Http SSL Port : Provide the browser to be connected with the appointed Http SSL port to this equipment.

API Port : Provide the Application Program to be connected with the appointed connect port to this equipment. This product provides API for the user to develop program connected with this equipment to get the power, electric current, temperature status and control power (please refer to the explanation 6-3.) You must setup the network vent connecting the program with this equipment.

3-2-2 Email Server Setup

When there is a warning , the email service data setup for sending the warning case.

| Email Server Setup | |
|--|-------------------------------------|
| SMTP Server Address | mail.bellwin.com.tw |
| SMTP Port | 25 |
| Sender Mail Address | smartpower@bellwin.com.tw |
| Mail Subject | smartpower Warning |
| SMTP Auth | <input checked="" type="checkbox"/> |
| SMTP Account | admin |
| SMTP Password | ••••• |
| <input type="button" value="Mail Test"/> | |
| <input type="button" value="Save"/> | |

SMTP Server Address : When the warning message is sent by email, you must help to send out the email to the main server address.

SMTP Port : When the warning is sent by email, you must help to send out the email to main server connect port. The preset value is 25.

Sender Mail Address : When the Receiver gets the email, it will be revealed in sender's data of email.

Mail Subject : When the Receiver gets the email, it will be revealed in Subject data of email.

SMTP Auth : If the setup mail server needs to identify the user, please mark this item and setup the account and password.

SMTP Account : Loaded account for email server.

SMTP Password : Loaded password for email server.

3-2-3 Message Server Setup

When there is a warning , setup the warning message data in the Message Server.

| Message Server Setup | |
|---|-------------------------------------|
| Server Address | 192.168.1.4 |
| Port | 2500 |
| Equipment Name | Remote Power Management System |
| Account | admin |
| Password | ●●●●●●●● |
| Send SMS | <input checked="" type="checkbox"/> |
| <input type="button" value="SMS Test"/> | |
| <input type="button" value="Save"/> | |

Server Address : When the warning system is sending the message, it helps to send the message to the server address.

Port : When the warning system is sending the message, it helps to send the message to the server main connect port. The preset value is 2500.

Equipment Name : When the receiver gets the message, it will be revealed in the data of Message Sender.

Account : Account to load in Message Server.

Password : Password to load in Message Server.

Send SMS : If it is needed to start Message Sending mechanic.

3-2-4 SNMP Setup

| MIB System | | | |
|---------------------|---------------|-----------|-------------------------------------|
| System Name | SmartPower 4L | | |
| System Contact | Administrator | | |
| System Location | Office | | |
| TRAP Notification | | | |
| Receiver IP Address | Receiver Port | Community | Enabled |
| 192.168.1.213 | 162 | public | <input checked="" type="checkbox"/> |
| | | | <input type="checkbox"/> |
| | | | <input type="checkbox"/> |
| | | | <input type="checkbox"/> |
| | | | <input type="checkbox"/> |
| | | | <input type="checkbox"/> |
| | | | <input type="checkbox"/> |
| | | | <input type="checkbox"/> |
| | | | <input type="checkbox"/> |

System Name : Display System Name on the program of SNMP Client.

System Contact : Display System Contact Person on the program of SNMP Client.

System Location : Display System Site on the program of SNMP Client.

Receiver IP Address : When something happens to Trap and it is IP site which will be sent to Trap.

Receiver Port : When something happens to Trap and intends to send to Trap server, it is the Connect Port for Trap server. The inner setup value is 162.

Community : When something happens to Trap and intends to transmit to Trap server, the group will be sent to Trap server.

Enabled : While mark the using option, if something happens to Trap, Trap Case Information will be sent to the appointed Trap server.

3-2-5 Other Setups

You may setup when the user enters by phone, the system will execute IVR process after several rings. When SmartPower is connected with other phone, you can setup the larger ring-answering value for convenience of the user to answer the phone firstly. When the phone is nobody answered, SmartPower will answer it then.

| | | | | |
|---|--------------------------------|------------|------|-------|
| Network | Mail Server | SMS Server | SNMP | Other |
| Ring Setup | | | | |
| Answer Ring | <input type="text" value="1"/> | | | |
| Reboot power switch | | | | |
| Reboot Option | <input type="checkbox"/> | | | |
| <input type="checkbox"/> Reboot Device | | | | |
| <input type="button" value="Save"/> | | | | |

[Answering Ring Setup](#) : Setup the answering ring times.

[Reboot Power Switch](#) : Setup if the selection of Power Switch Reboot is on START or not.

[Reboot Device](#) : Reboot the SmartPower.

3-3 Account Management

Choose **Account** in Webpage Management Function List, and then proceed the Account Management. You may setup 4 sets of accounts in total.

3-3-1 Account Add

| ID | Account | Password | TEL Password | Cellphone | Mail Address | 1 | 2 | 3 | 4 | Del |
|----|---------|----------|--------------|-----------|--------------|-------------------------------------|-------------------------------------|-------------------------------------|-------------------------------------|--------------------------|
| 1 | admin | ●●●●●● | ●●●●●● | | | <input checked="" type="checkbox"/> | <input checked="" type="checkbox"/> | <input checked="" type="checkbox"/> | <input checked="" type="checkbox"/> | |
| 2 | | | | | | <input type="checkbox"/> | <input type="checkbox"/> | <input type="checkbox"/> | <input type="checkbox"/> | <input type="checkbox"/> |
| 3 | | | | | | <input type="checkbox"/> | <input type="checkbox"/> | <input type="checkbox"/> | <input type="checkbox"/> | <input type="checkbox"/> |
| 4 | | | | | | <input type="checkbox"/> | <input type="checkbox"/> | <input type="checkbox"/> | <input type="checkbox"/> | <input type="checkbox"/> |

Account : When enter the webpage, it will request to input User's account.

Password : When enter the webpage, it will request to input User's password.

TEL Password : When operate by phone, the phone voice will request to input the password for six digits.

Cellphone : When there is a warning , the mobile phone number it will transmit to.

Mail Address : When there is a warning case, the email address it will transmit to.

You may setup the using authorization for all routes power switch according to each account setup.

| | 1 | 2 | 3 | 4 | Del |
|--|-------------------------------------|-------------------------------------|-------------------------------------|-------------------------------------|--------------------------|
| | <input checked="" type="checkbox"/> | <input checked="" type="checkbox"/> | <input checked="" type="checkbox"/> | <input checked="" type="checkbox"/> | |
| | <input type="checkbox"/> | <input checked="" type="checkbox"/> | <input type="checkbox"/> | <input checked="" type="checkbox"/> | <input type="checkbox"/> |
| | <input type="checkbox"/> | <input type="checkbox"/> | <input type="checkbox"/> | <input type="checkbox"/> | <input type="checkbox"/> |

3-3-2 Account Delete

| Name | Cellphone | Mail Address | 1 | 2 | 3 | 4 | Del |
|------|-----------|--------------|-------------------------------------|-------------------------------------|-------------------------------------|-------------------------------------|-------------------------------------|
| ● | | | <input checked="" type="checkbox"/> | <input checked="" type="checkbox"/> | <input checked="" type="checkbox"/> | <input checked="" type="checkbox"/> | <input checked="" type="checkbox"/> |
| ● | | | <input type="checkbox"/> | <input checked="" type="checkbox"/> | <input type="checkbox"/> | <input checked="" type="checkbox"/> | <input checked="" type="checkbox"/> |
| | | | <input type="checkbox"/> | <input type="checkbox"/> | <input type="checkbox"/> | <input type="checkbox"/> | <input type="checkbox"/> |
| | | | <input type="checkbox"/> | <input type="checkbox"/> | <input type="checkbox"/> | <input type="checkbox"/> | <input type="checkbox"/> |

3 Save

2 Delete

1

- 1** Choose and mark to delete User's Data.
- 2** Press 「Delete」 button to proceed the action of deleting User's Data.
- 3** After deleting the data, you must press「Save」button to store the deleting setup really.

3-4 Time Simultaneity

| Equipment Time | |
|-----------------------------|------------|
| Equipment Date (yyyy-mm-dd) | 2006-03-20 |
| Equipment Time (hh:mm:ss) | 15:45:07 |

| System Time | |
|---|--|
| <input checked="" type="radio"/> Sync with PC | |
| PC Date (yyyy-mm-dd) | 2006-03-20 |
| PC Time (hh:mm:ss) | 15:45:07 |
| <input type="radio"/> Sync with NTP Server | |
| NTP Server Address | time.stdtime.gov.tw <input type="button" value="New"/> |
| Time Zone | : GMT + 08 : 00 |
| <input type="radio"/> Manual Setup | |
| Date (yyyy-mm-dd) | 2006-03-20 |
| Time (hh:mm:ss) | 15:45:00 |

Equipment Date : The system date of SmartPower Device.

Equipment Time : The system time of SmartPower Device.

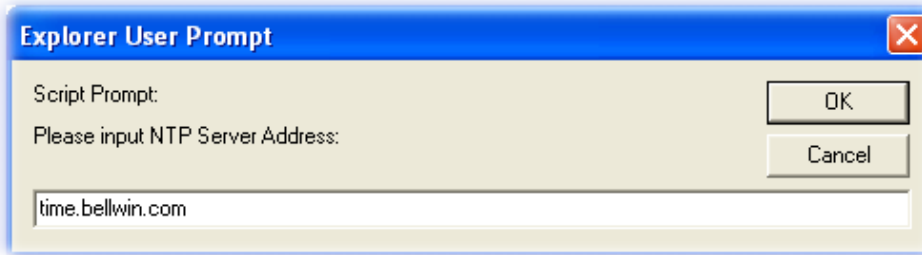
Sync with PC : If you choose this item, the equipment time and computer system time will be identical.

PC Date : The current Computer System Date.

PC Time : The current Computer System Time.

Sync with NTP Server : If you choose this item, the equipment time and Time Server will be identical.

NTP Server Address : SmartPower presets several Time Servers for choice. If there is not the Time Server you want in the Time Server list, you may re-add Time Server by yourself and then setup the time. Press「New」button, when the window below appears, input the NTP server address and then press 「OK」.



Time Zone : This time area is relative to Greenwich time. The time for the normal time server is simultaneous with Greenwich Time. So it is needed to adjust to local time.

Manual Setup : If you choose this item, the equipment time will be setup manually.

Date : Keyin the date manually. Please keyin by the correct Date Form.

Time : Keyin the time manually. Please keyin by the correct Time Form.

3-5 Event Record

In this Webpage, you may check the operation and warning events in the recent 7 days. You may see the action time and operated reason for each Power Switch. At the same time, if Power Switch can't be operated normally, it will produce warning case.

| Time | Message |
|---------------------|--------------------------------|
| 2006/03/21 09:43:58 | Software Reboot |
| 2006/03/21 09:48:53 | Port:1[First Outlet]Power On |
| 2006/03/21 09:48:53 | Port:2[Second Outlet]Power On |
| 2006/03/21 09:48:54 | Port:3[Third Outlet]Power Off |
| 2006/03/21 09:48:54 | Port:4[Fourth Outlet]Power Off |
| 2006/03/21 09:48:55 | Port:5[Fifth Outlet]Power Off |
| 2006/03/21 09:48:55 | Port:6[Sixth Outlet]Power Off |
| 2006/03/21 09:48:57 | Port:6[Sixth Outlet]Power On |
| 2006/03/21 09:48:58 | Port:5[Fifth Outlet]Power On |
| 2006/03/21 09:48:59 | Port:4[Fourth Outlet]Power On |
| 2006/03/21 09:48:59 | Port:3[Third Outlet]Power On |
| 2006/03/21 09:49:00 | Port:2[Second Outlet]Power Off |
| 2006/03/21 09:49:01 | Port:2[Second Outlet]Power On |

Click to choose “Operated Event” or “Warning Event” and choose date from date bar, then press "OK" button , It will show the event information.

“Download” button means save the information to be a .csv file in the HD.

“Delete” button means delete the information.

3-6 Firmware Upgrade

You may download the newest Firmware in the website of the supplier to proceed SmartPower Upgrade.

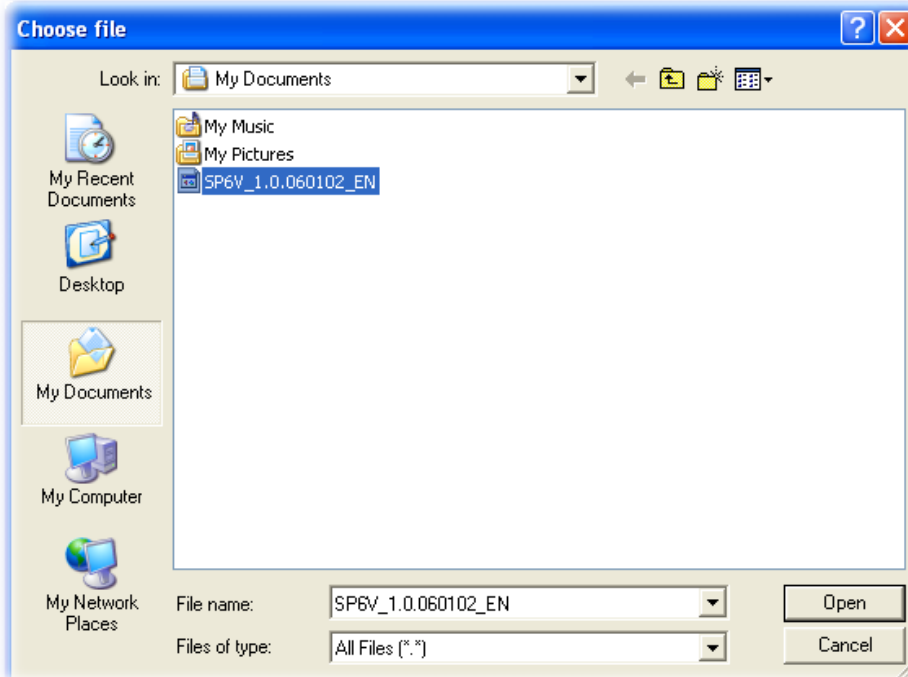
3-6-1 Firmware Upgrade

| | |
|---|---|
| Production Name : SP4L | |
| System Version : 2.00.070412-2 | |
| Please Select File: | <input type="text"/> <input type="button" value="Browse..."/> |
| <input type="button" value="Firmware Upgrade"/> | |

Steps of Upgrade are as below :

Step 1 : Press 「 BROWSE 」 button.

Step 2 : Select the catalogue of Firmware Renew File and press 「 OPEN 」 after selecting the file.



Step3 : By means of upgraded Firmware Function, when you press 「Upgrade Firmware(Upgrade)」 button, it will display according to the following state. Router will re-start automatically and finish the firmware upgraded.



If the file you choose is not Firmware file or it is old-fashioned version, you can't do the action of SmartPower Upgrading.

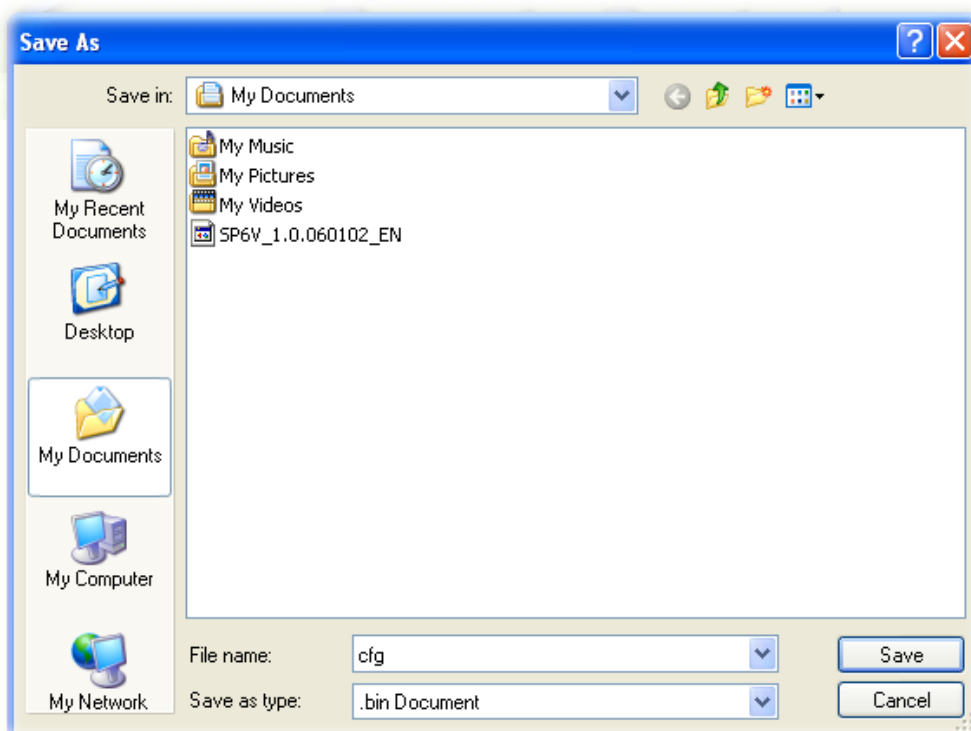
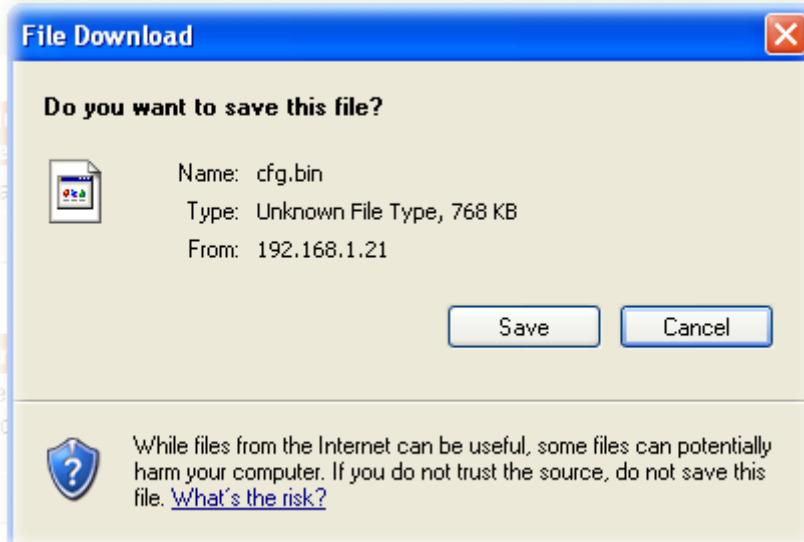
3-6-2 Download / Reset Configuration

| Download / Reset Configuration | |
|---|---|
| Please Select Configuration file: | <input type="text"/> <input type="button" value="Browse..."/> <input type="button" value="Upload"/> |
| <input type="button" value="Download"/> | |

The steps of Store Setup File are as below :

Step 1 : Press 「 Download 」 button.

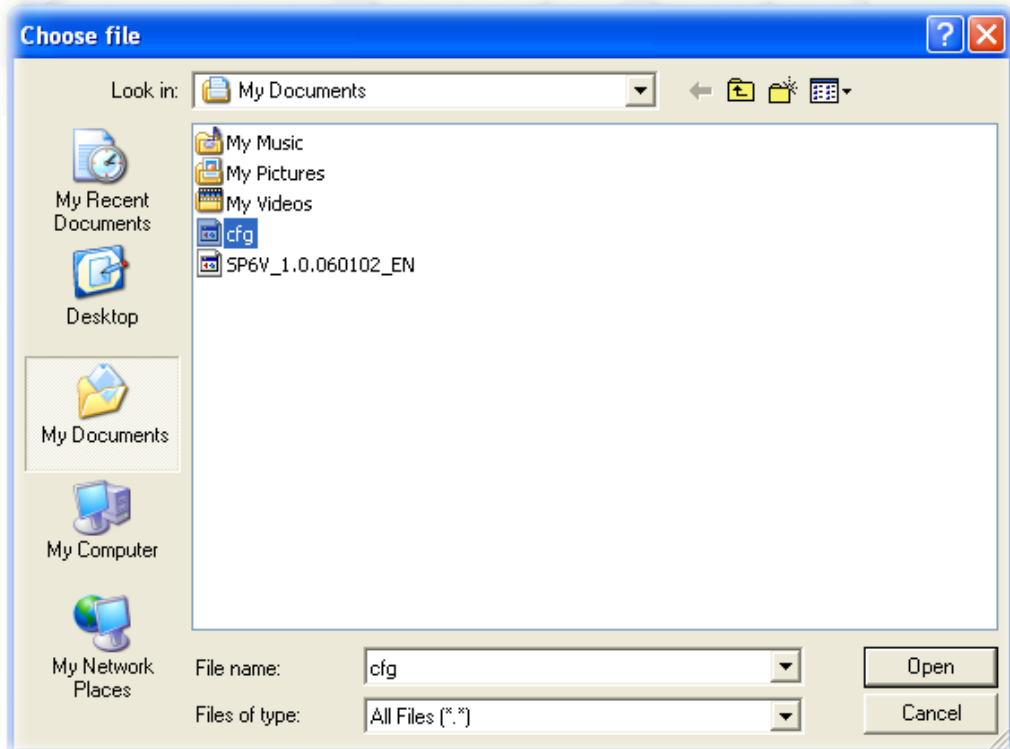
Step 2 : Store Setup File in the catalogue you appointed.



The step to reset configuration are as below :

Step 1 : Press 「 BROWSE 」 button.

Step 2 : Select the catalogue of Setup File and press 「 OPEN 」 after selecting.



Step3 : By means of Re-set Setup File Function, when you press 「Upload」 button, it will be displayed according to the following state: SmartPower will reboot automatically, and will finish Setup File Reset.



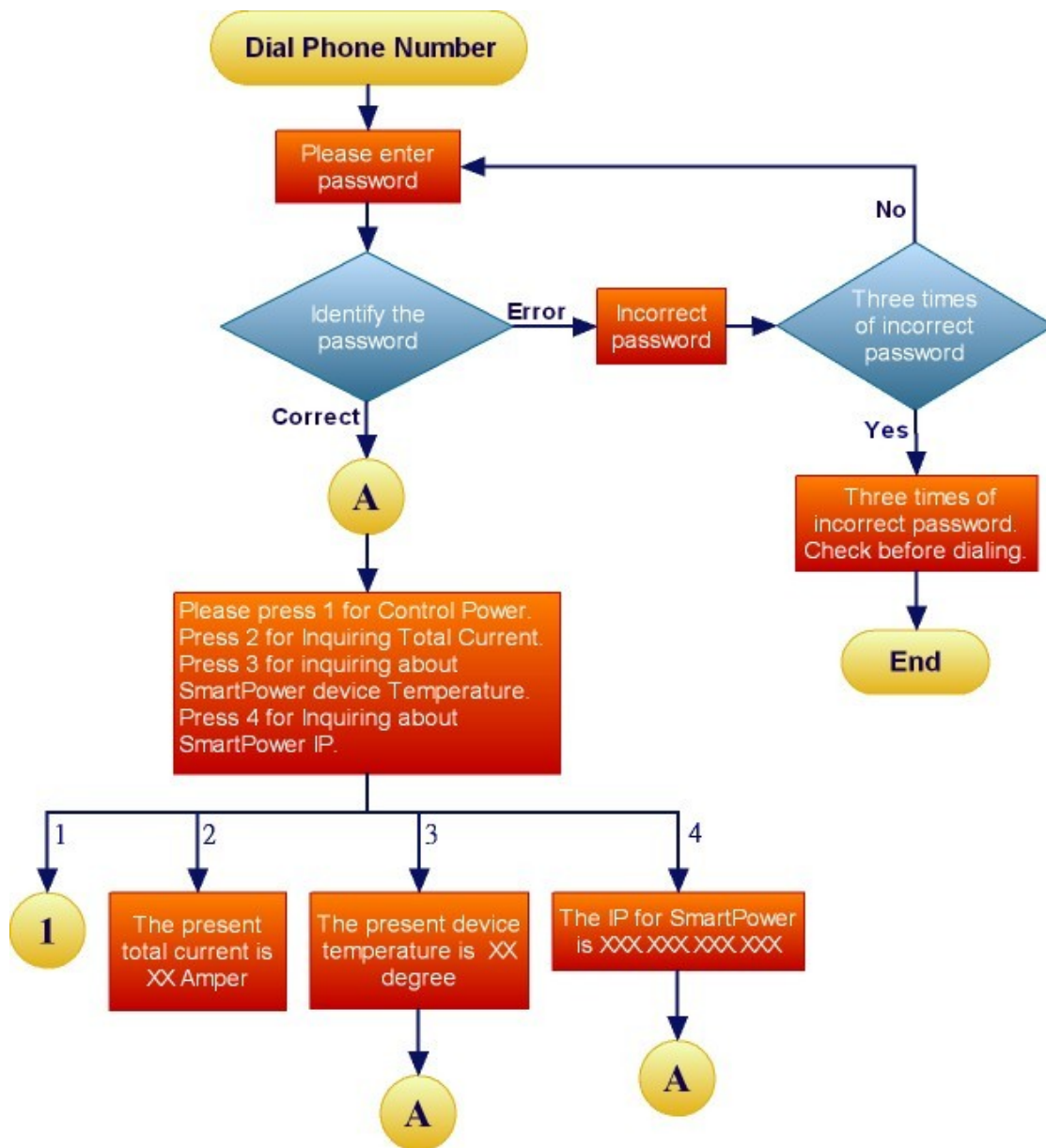
When the file you choose is not SETUP File, you can't proceed the action of SmartPower Setup File Reset.

四、Phonetic Operation Procedure

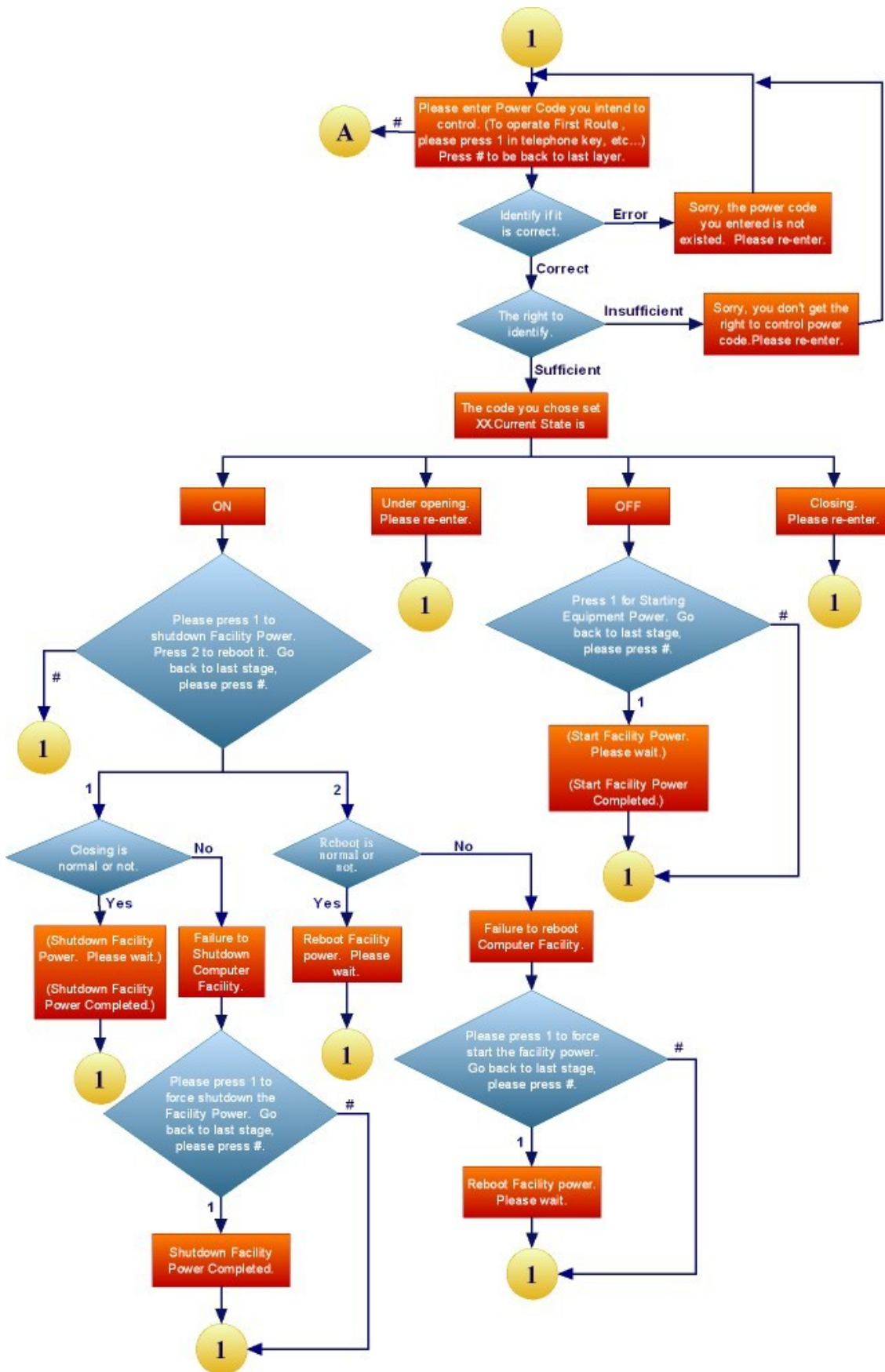
This chapter is mainly to explain the operation procedure for SmartPower Phonetic System. The users can use the phone to dial the voicemail to operate the Power Switch and read the electric current, temperature and website. This chapter is divided into the Main Procedure, the Power Control Procedure, and Power Electric Current Procedure. After finish playing the phone voic for over 5 seconds, if you do not press any key, it will hang up the phone automatically to prevent from phone line jammed.

※ The prompted Phonetic system password for this system account admin is “123456”.

4-1 Main Procedure



4-2 Power Control Procedure



Attachment (A): How to return SmartPower setup to initial value.

When you forget the password of network account of SmartPower, you can utilize “RESET” button of SmartPower to return the initial value. At the same time, SmartPower will carry out the action of reboot, too. Please note, after operating “RESET” button. It will clear up all the users information. Meanwhile, the webpage management account number and password to return to “admin”. And the phone password will be returned to “123456”, the network site will be to “192.168.1.10.” The other data will be remained unchanged.

Use nib or thing to press “Reset” button slightly. After seconds, the phone indicating light will flash and then the machine will be reboot.



Attachment(B): How to use tape recorder to record equipment voice file.

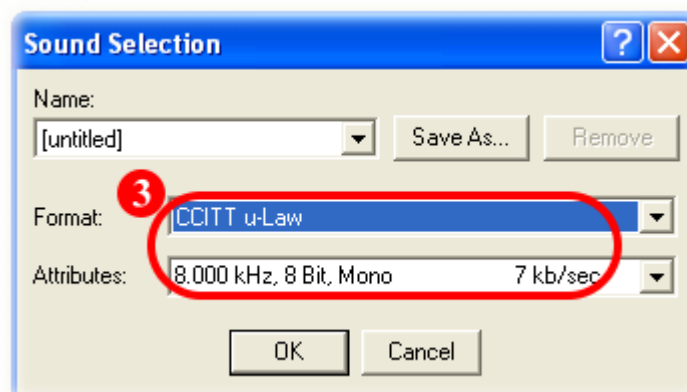
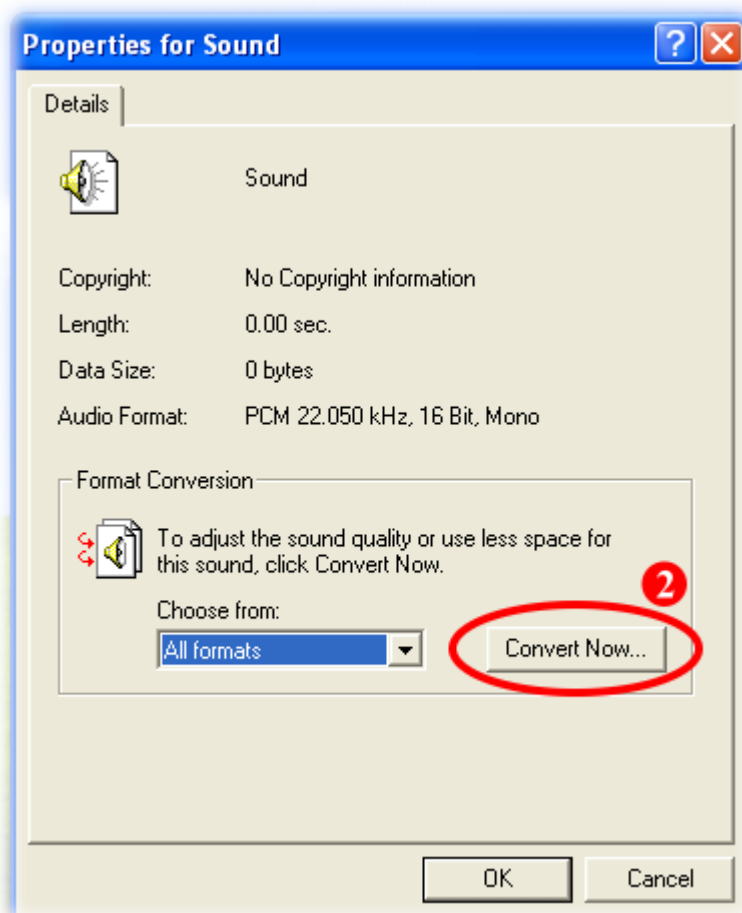
You can utilize recorder procedure of Windows to record equipment voice file and reach it to the equipment of SmartPower.

- 1 Turn on the recorder procedure in Windows to record your equipment voice message.

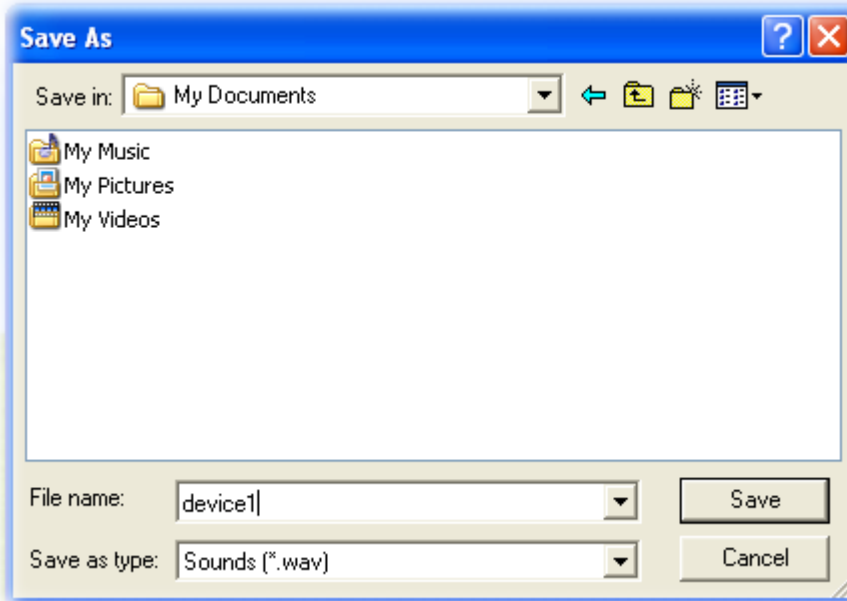


- 2 Turn on the recorder [File / Properties], after selecting, press the voice file content transform to CCITT u-Law 8KHz 8 bytes.





- 3 It will store the recorded equipment voice file to the catalogue you appointed.



- 4 It will store it while reaching SmartPower equipment on the equipment voice file of your computer. (please refer to 3-1-7)

