

# 2ENTRY Helios display

Order no. 9135240E



## Description

Built-in set **2ENTRY Helios display** will allow you to expand any kind of the base module of **2ENTRY Helios** door communicator with a graphical display, displaying a phone list. Maximum capacity of the phone list is 1000 items. Full graphical display will allow you to display names, logos, or flat numbers. For searching the list of names, designated buttons are used with the name tags at the base module of **2ENTRY Helios**. Where the base module has a built-in keypad, this can be used for searching for fast items finding in multiple modes. Telephone list can be programmed from the PC using the USB port.

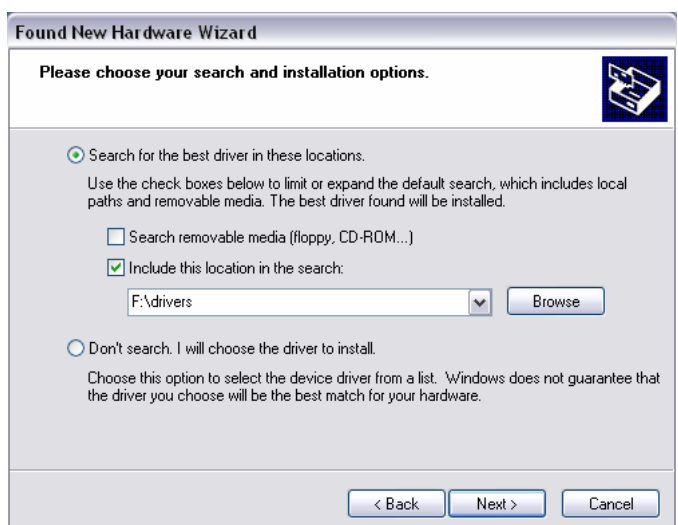
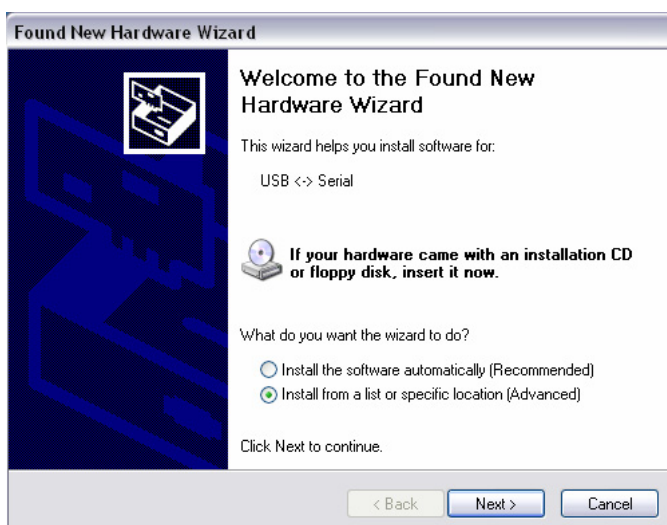
## Warning!

Before displaying the connection via the USB port of PC, it is necessary to disconnect display from base PCB of the door phone. **If not done, it can damage the display, door phone PCB or connected PC!**

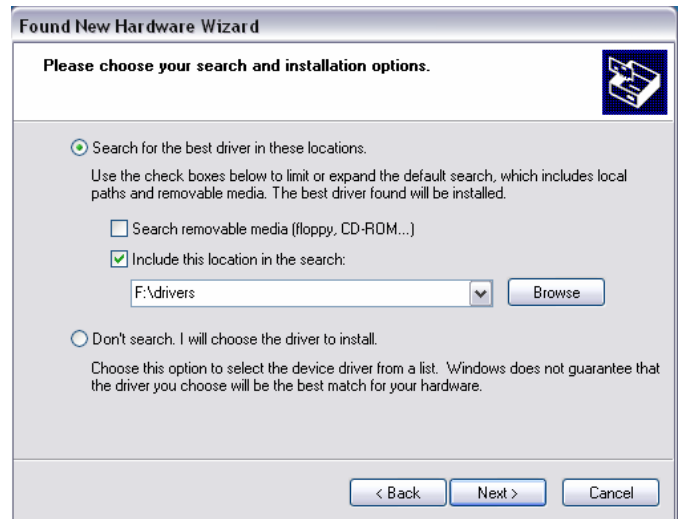
## Telephone list transfer

Before transferring to the display, it is necessary to create a file containing the phone list. The file can be created by the web application situated on the manufacturer's site [www.2n.cz](http://www.2n.cz). With the same application you can also scroll through or edit all ready existing phone lists.

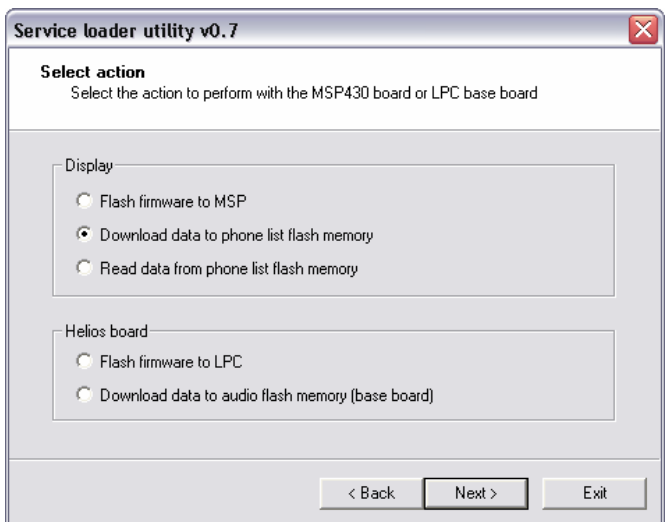
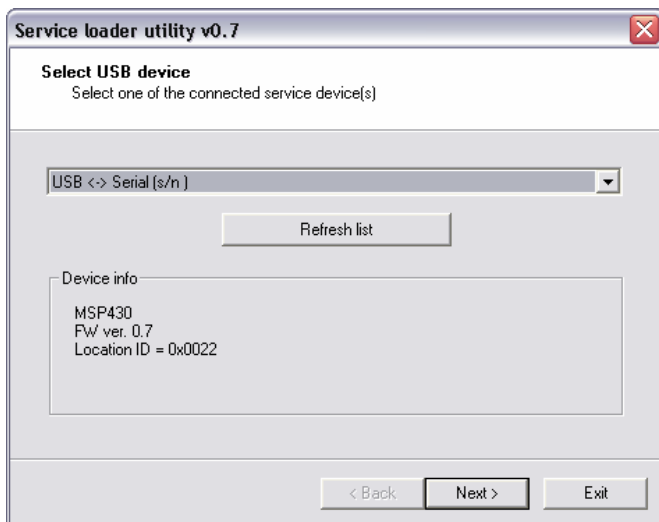
After you successfully create the file, connect display to the USB port of the PC. With the first connection to the PC, an automatic pop up will inform you that New Hardware was found. Insert the provided CD. In the dialog window select **Install from a list or specific location (Advanced)**. Click **Next**. In the next wizard window select the way to the file **Driver** on supplied CD and then click **Next**.



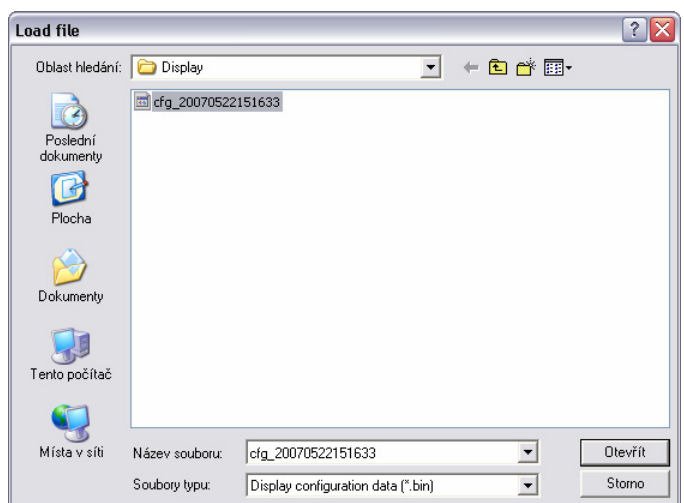
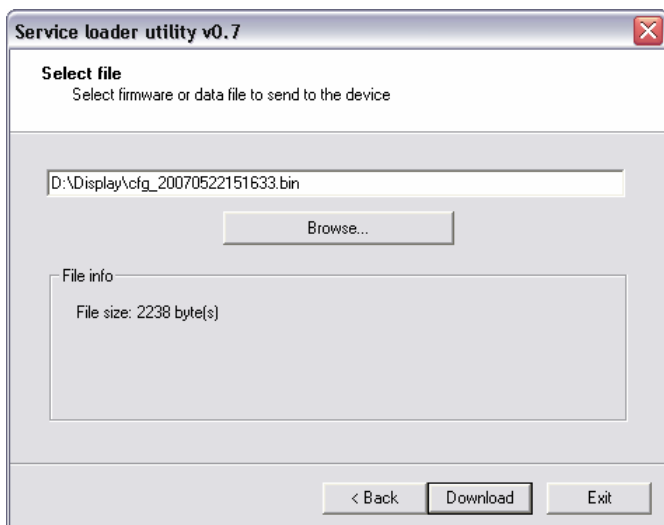
After finishing the installation click Finish. The second part of installation will run automatically. Continue in the same way as with first installation.



When the display USB interface drivers installation is done, run the application for display data recording. Select interface **USB ↔ Serial** and click **Next**. In the dialog window select the type of action required, **Download data to phone list flash memory** and click **Next**.



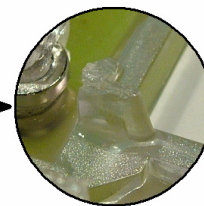
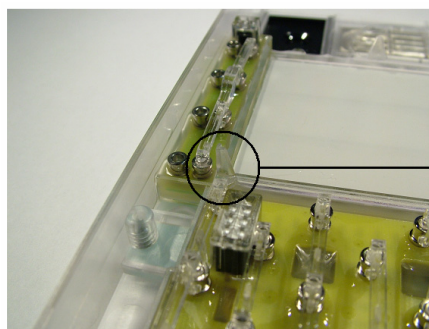
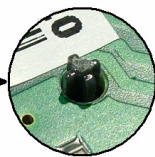
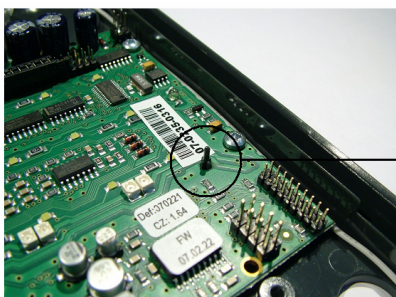
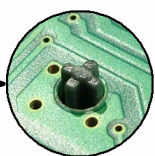
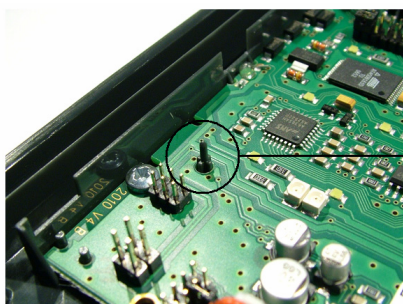
In the dialog window click **Browse** and then search and select file with telephone list that will be loaded into display. Click **Download**, the file will be loaded into display. Application can be closed after data transfer by clicking **Exit** and then disconnected from computer.



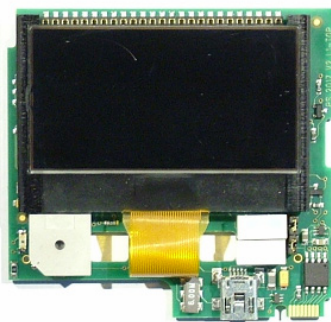
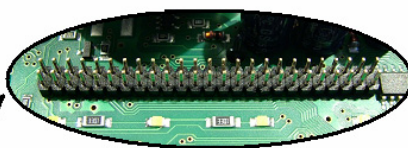
## Installation into communicator

Display with recorded phone list is possible to install into door communicator:

1. Remove metal cover from the door phone.  
Dismount the front plastic panel from the back plastic panel.
2. From the back and front plastic panels, cut off plastic shoulders by using small clippers.

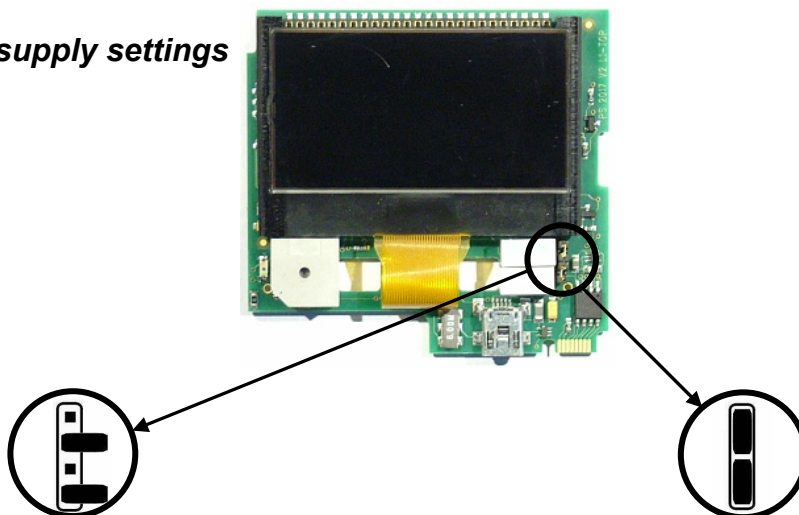


3. From the long double line connectors on main board remove all connectors (jumpers) and then connect main board of display.



4. Connect door phone to a telephone line and then after approx. 60 seconds make incoming call to it. In the event that call is successful enter a service mode and change parameter 923 to 1. With this change you will allow dial up numbers from the display.
5. In the event that you can not make a call to a door phone due to a busy line, set jumpers on display PCB to position as described in the picture below on right. To the PCB of door phone connect a 12V, 2A power supply (order no. 91341481) and repeat point 4.

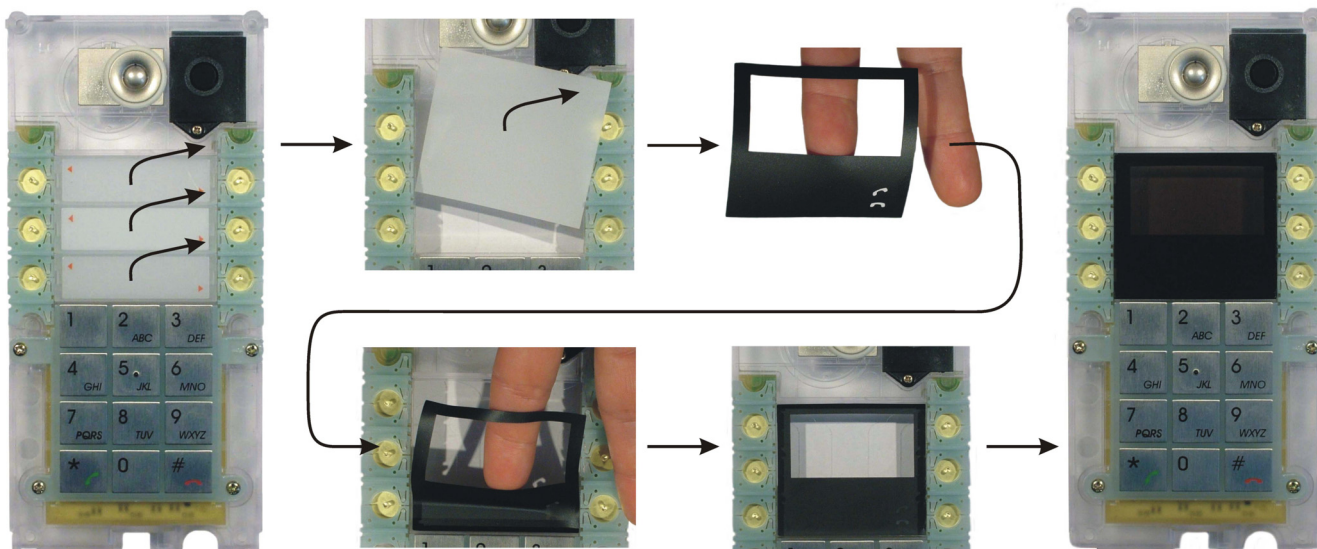
**Display power supply settings**



Display circuits (except backlight) are powered from a telephone line. In the event this is possible, use this kind of setting. (Recommended).

All circuits are powered from additional power supply. Use these settings only if there are difficulties with telephone line (line with door phone is continually busy). With this kind of setting, there is a possibility of hum from power supply adapter into the phone line.

6. Remove all three nametags from the front plastic panel. From the space underneath the name tags remove white milky foil and insert the black mask supplied with the display. Then cover the space by provided black smoky window.



7. Finish the installation by assembling door communicator panels back together.

## Warnings – display power supply

Power supply of the display is common with communicator name tags backlight. For communicator with display **it is necessary to use galvanic isolated stabilised 12V, 2A power supply (order number 91341481E). By using different type of power supply you are taking a risk of damaging the display and the communicator!**

## Display operation

Movement through phone list and selection of specific item is done by designated buttons on right hand side of the display. In the event that your communicator is equipped with buttons on left hand side, these are possible to use for fast scrolling through the phone list. Beside each button on the display are arrow icons as a help (buttons for scrolling up / down) and also icons of green / red phone receiver (button for call beginning / call ending).

In the event that your communicator is equipped with the numerical keypad, this can be used for searching through a phone list in several modes. List of keypad modes can be found in below table:

Display modes	Mode description
0 – keypad completely ignored	Keypad disabled for name searching as well as for basic communicator functions. Display operated by arrows only.
1 – display controlled by arrows only	Keypad enabled only for basic communicator functions ( <i>code lock, telephone mode, button substitution by keypad</i> ). Display operated by arrows only.
2 – name entry (same as on mobile phone while writing SMS)	By buttons 2 to 9 on keypad are entered beginning character of searched name. At fast repeated push of the same button is entered character changed, for example button 2: A→B→C→2.
3 – number entry that is a part of a name	By buttons 0 to 9 on keypad are entered digit string searched in names of phone list. Phone list then can look like for example: “Flat no. 124” or “124 Mr. Smith”.
4 – name entry without multiple button pushing (predictive)	By buttons 2 to 9 on keypad are entered beginning characters of searched name. Fast repeated push of the same button is not used. For example for entry letter C push button 2 only 1x.

Selection of one of the above mentioned numerical keypad mode is done within phone list creating wizard.

## Technical parameters

Display type	B/W, graphical
Display resolution	128x64 pixels
Backlight colour	white
List capacity	1000 items
Configuration interface	USB